
Product Name: BRS-3 Rabbit Polyclonal Antibody**Catalog #: APRab07667**

For research use only.

Summary

Description	Rabbit polyclonal Antibody
Host	Rabbit
Application	WB,IHC,ICC/IF,ELISA
Reactivity	Human,Rat,Mouse
Conjugation	Unconjugated
Modification	Unmodified
Isotype	IgG
Clonality	Polyclonal
Form	Liquid
Concentration	1mg/ml
Storage	Aliquot and store at -20°C (valid for 12 months). Avoid freeze/thaw cycles.
Shipping	Ice bags
Buffer	Liquid in PBS containing 50% glycerol, 0.5% protective protein and 0.02% New type preservative N.
Purification	Affinity purification

Application

Dilution Ratio	WB 1:500-1:2000,IHC 1:100-1:300,ICC/IF 1:200-1:1000,ELISA 1:5000-1:20000
Molecular Weight	47kDa

Antigen Information

Gene Name	BRS3
Alternative Names	BRS3; Bombesin receptor subtype-3; BRS-3
Gene ID	680.0
SwissProt ID	P32247
Immunogen	The antiserum was produced against synthesized peptide derived from human BRS3. AA range:161-210

Background

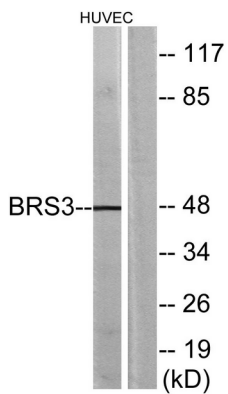
The protein encoded by this gene is a G protein-coupled membrane receptor that binds bombesin-like peptides. This binding

results in activation of a phosphatidylinositol-calcium second messenger system, with physiological effects including regulation of metabolic rate, glucose metabolism, and hypertension. [provided by RefSeq, Sep 2011],function:Role in sperm cell division, maturation, or function. This receptor mediates its action by association with G proteins that activate a phosphatidylinositol-calcium second messenger system.,similarity:Belongs to the G-protein coupled receptor 1 family.,tissue specificity:In germ cells in testis. Lung carcinoma cells.,

Research Area

Neuroactive ligand-receptor interaction;

Image Data



Western blot analysis of lysates from HUVEC cells, using BRS3 Antibody. The lane on the right is blocked with the synthesized peptide.