
Product Name: Brp44L Rabbit Polyclonal Antibody**Catalog #: APRab07665**

For research use only.

Summary

Description	Rabbit polyclonal Antibody
Host	Rabbit
Application	WB,IHC,ICC/IF,ELISA
Reactivity	Human,Mouse,Rat
Conjugation	Unconjugated
Modification	Unmodified
Isotype	IgG
Clonality	Polyclonal
Form	Liquid
Concentration	1mg/ml
Storage	Aliquot and store at -20°C (valid for 12 months). Avoid freeze/thaw cycles.
Shipping	Ice bags
Buffer	Liquid in PBS containing 50% glycerol, 0.5% protective protein and 0.02% New type preservative N.
Purification	Affinity purification

Application

Dilution Ratio	WB 1:500-1:2000,IHC 1:100-1:300,ICC/IF 1:200-1:1000,ELISA 1:10000-1:20000
Molecular Weight	12kDa

Antigen Information

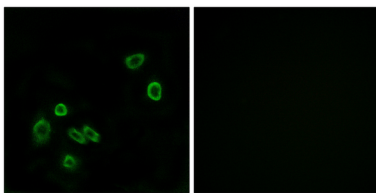
Gene Name	MPC1
Alternative Names	MPC1; BRP44L; CGI-129; HSPC040; PNAS-115; Mitochondrial pyruvate carrier 1; Brain protein 44-like protein
Gene ID	51660.0
SwissProt ID	Q9Y5U8
Immunogen	The antiserum was produced against synthesized peptide derived from human BRP44L. AA range:11-60

Background

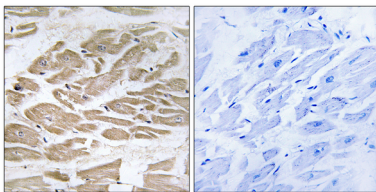
The protein encoded by this gene is part of an MPC1/MPC2 heterodimer that is responsible for transporting pyruvate into mitochondria. The encoded protein is found in the inner mitochondrial membrane. Defects in this gene are a cause of mitochondrial pyruvate carrier deficiency. Several transcript variants, some protein coding and one non-protein coding, have been found for this gene. [provided by RefSeq, Aug 2012],similarity:Belongs to the UPF0041 (0-44) family.,

Research Area

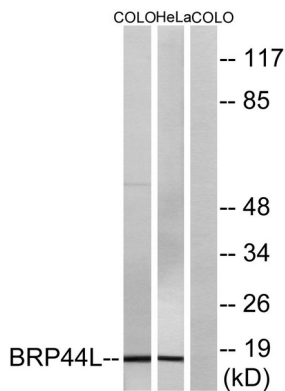
Image Data



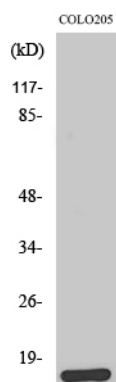
Immunofluorescence analysis of A549 cells, using BRP44L Antibody. The picture on the right is blocked with the synthesized peptide.



Immunohistochemistry analysis of paraffin-embedded human heart tissue, using BRP44L Antibody. The picture on the right is blocked with the synthesized peptide.



Western blot analysis of lysates from COLO and HeLa cells, using BRP44L Antibody. The lane on the right is blocked with the synthesized peptide.



Western Blot analysis of various cells using Brp44L Polyclonal Antibody