
Product Name: Brp44 Rabbit Polyclonal Antibody**Catalog #: APRab07664**

For research use only.

Summary

Description	Rabbit polyclonal Antibody
Host	Rabbit
Application	IHC,ICC/IF,ELISA
Reactivity	Human,Mouse,Rat
Conjugation	Unconjugated
Modification	Unmodified
Isotype	IgG
Clonality	Polyclonal
Form	Liquid
Concentration	1mg/ml
Storage	Aliquot and store at -20°C (valid for 12 months). Avoid freeze/thaw cycles.
Shipping	Ice bags
Buffer	Liquid in PBS containing 50% glycerol, 0.5% protective protein and 0.02% New type preservative N.
Purification	Affinity purification

Application

Dilution Ratio IHC 1:100-1:300,ICC/IF 1:50-1:200,ELISA 1:20000-1:40000

Molecular Weight

Antigen Information

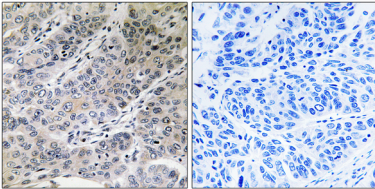
Gene Name	MPC2
Alternative Names	MPC2; BRP44; Mitochondrial pyruvate carrier 2; Brain protein 44
Gene ID	25874.0
SwissProt ID	O95563
Immunogen	The antiserum was produced against synthesized peptide derived from human BRP44. AA range:31-80

Background

similarity:Belongs to the UPF0041 (0-44) family.,similarity:Belongs to the UPF0041 (0-44) family.,

Research Area

Image Data



Immunohistochemistry analysis of paraffin-embedded human lung carcinoma tissue, using BRP44 Antibody. The picture on the right is blocked with the synthesized peptide.