

**Product Name: Brp16 Rabbit Polyclonal Antibody****Catalog #: APRab07663**

For research use only.

**Summary**

<b>Description</b>	Rabbit polyclonal Antibody
<b>Host</b>	Rabbit
<b>Application</b>	WB,IHC,ICC/IF,ELISA
<b>Reactivity</b>	Human,Mouse,Rat
<b>Conjugation</b>	Unconjugated
<b>Modification</b>	Unmodified
<b>Isotype</b>	IgG
<b>Clonality</b>	Polyclonal
<b>Form</b>	Liquid
<b>Concentration</b>	1mg/ml
<b>Storage</b>	Aliquot and store at -20°C (valid for 12 months). Avoid freeze/thaw cycles.
<b>Shipping</b>	Ice bags
<b>Buffer</b>	Liquid in PBS containing 50% glycerol, 0.5% protective protein and 0.02% New type preservative N.
<b>Purification</b>	Affinity purification

**Application**

<b>Dilution Ratio</b>	WB 1:500-1:2000,IHC 1:100-1:300,ICC/IF 1:50-1:200,ELISA 1:20000-1:40000
<b>Molecular Weight</b>	40kDa

**Antigen Information**

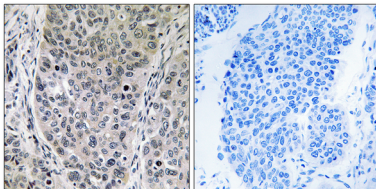
<b>Gene Name</b>	FAM203A
<b>Alternative Names</b>	FAM203A; BRP16; C8orf30A; Protein FAM203A; Brain protein 16
<b>Gene ID</b>	51236.0
<b>SwissProt ID</b>	Q9BTY7
<b>Immunogen</b>	The antiserum was produced against synthesized peptide derived from human BRP16. AA range:251-300

**Background**

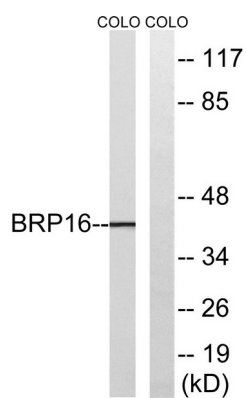
similarity:Belongs to the UPF0570 (BRP16/HGH1) family.,similarity:Belongs to the UPF0570 (BRP16/HGH1) family.,

## Research Area

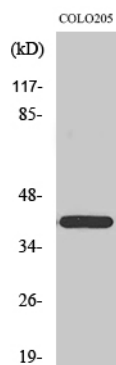
## Image Data



Immunohistochemistry analysis of paraffin-embedded human lung carcinoma tissue, using BRP16 Antibody. The picture on the right is blocked with the synthesized peptide.



Western blot analysis of lysates from COLO cells, using BRP16 Antibody. The lane on the right is blocked with the synthesized peptide.



Western Blot analysis of various cells using Brp16 Polyclonal Antibody