

**Product Name: BRMS-1 Rabbit Polyclonal Antibody****Catalog #: APRab07660**

For research use only.

**Summary**

<b>Description</b>	Rabbit polyclonal Antibody
<b>Host</b>	Rabbit
<b>Application</b>	WB,ELISA
<b>Reactivity</b>	Human,Mouse,Rat
<b>Conjugation</b>	Unconjugated
<b>Modification</b>	Unmodified
<b>Isotype</b>	IgG
<b>Clonality</b>	Polyclonal
<b>Form</b>	Liquid
<b>Concentration</b>	1mg/ml
<b>Storage</b>	Aliquot and store at -20°C (valid for 12 months). Avoid freeze/thaw cycles.
<b>Shipping</b>	Ice bags
<b>Buffer</b>	Liquid in PBS containing 50% glycerol, 0.5% protective protein and 0.02% New type preservative N.
<b>Purification</b>	Affinity purification

**Application**

<b>Dilution Ratio</b>	WB 1:500-1:2000,ELISA 1:10000-1:20000
<b>Molecular Weight</b>	28kDa

**Antigen Information**

<b>Gene Name</b>	BRMS1
<b>Alternative Names</b>	BRMS1; Breast cancer metastasis-suppressor 1
<b>Gene ID</b>	25855.0
<b>SwissProt ID</b>	Q9HCU9
<b>Immunogen</b>	The antiserum was produced against synthesized peptide derived from the C-terminal region of human BRMS1. AA range:197-246

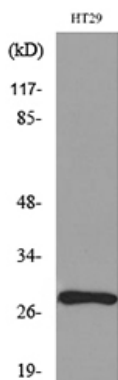
**Background**

This gene reduces the metastatic potential, but not the tumorigenicity, of human breast cancer and melanoma cell lines. The

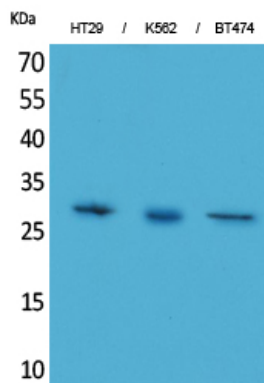
protein encoded by this gene localizes primarily to the nucleus and is a component of the mSin3a family of histone deacetylase complexes (HDAC). The protein contains two coiled-coil motifs and several imperfect leucine zipper motifs. Alternative splicing results in two transcript variants encoding different isoforms. [provided by RefSeq, Jul 2008],function:May be a mediator of metastasis suppression in breast carcinoma.,similarity:Belongs to the BRMS1 family.,tissue specificity:Expression levels are higher in term placentas than in early placentas. Low levels of expression observed in normal pregnancies and in molar pregnancies.,

## Research Area

## Image Data



Western blot analysis of lysate from HT29 cells, using BRMS1 Antibody.



Western Blot analysis of HT29, K562, BT474 cells using BRMS-1 Polyclonal Antibody.. Secondary antibody was diluted at 1:20000