
Product Name: Bob 1 Rabbit Polyclonal Antibody**Catalog #: APRab07622**

For research use only.

Summary

| | |
|----------------------|---|
| Description | Rabbit polyclonal Antibody |
| Host | Rabbit |
| Application | IHC,ICC/IF,ELISA |
| Reactivity | Human,Rat,Mouse |
| Conjugation | Unconjugated |
| Modification | Unmodified |
| Isotype | IgG |
| Clonality | Polyclonal |
| Form | Liquid |
| Concentration | 1mg/ml |
| Storage | Aliquot and store at -20°C (valid for 12 months). Avoid freeze/thaw cycles. |
| Shipping | Ice bags |
| Buffer | Liquid in PBS containing 50% glycerol, 0.5% protective protein and 0.02% New type preservative N. |
| Purification | Affinity purification |

Application

Dilution Ratio IHC 1:50-1:200,ICC/IF 1:50-1:200,ELISA 1:10000-1:20000

Molecular Weight

Antigen Information

| | |
|--------------------------|--|
| Gene Name | POU2AF1 OBF1 |
| Alternative Names | POU domain class 2-associating factor 1 (B-cell-specific coactivator OBF-1;BOB-1;OCA-B;OCT-binding factor 1) |
| Gene ID | 5450.0 |
| SwissProt ID | Q16633 |
| Immunogen | Synthetic peptide from human protein at AA range: 201-250 |

Background

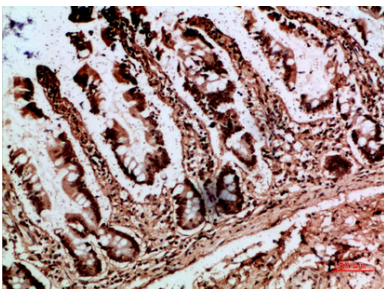
disease:A chromosomal aberration involving POU2AF1/OBF1 may be a cause of a form of B-cell leukemia. Translocation t(3;11)

(q27;q23) with BCL6.,function:Transcriptional coactivator that specifically associates with either OCT1 or OCT2. It boosts the OCT1 mediated promoter activity and to a lesser extent, that of OCT2. It has no intrinsic DNA-binding activity. It recognizes the POU domains of OCT1 and OCT2. It is essential for the response of B-cells to antigens and required for the formation of germinal centers.,PTM:Ubiquitinated; mediated by SIAH1 or SIAH2 and leading to its subsequent proteasomal degradation.,similarity:Belongs to the POU2AF1 family.,tissue specificity:B-cell specific.,disease:A chromosomal aberration involving POU2AF1/OBF1 may be a cause of a form of B-cell leukemia. Translocation t(3;11)(q27;q23) with BCL6.,function:Transcriptional coactivator that specifically associates with either OCT1 or OCT2. It boosts the OCT1 mediated promoter activity and to a lesser extent, that of OCT2. It has no intrinsic DNA-binding activity. It recognizes the POU domains of OCT1 and OCT2. It is essential for the response of B-cells to antigens and required for the formation of germinal centers.,PTM:Ubiquitinated; mediated by SIAH1 or SIAH2 and leading to its subsequent proteasomal degradation.,similarity:Belongs to the POU2AF1 family.,tissue specificity:B-cell specific.,

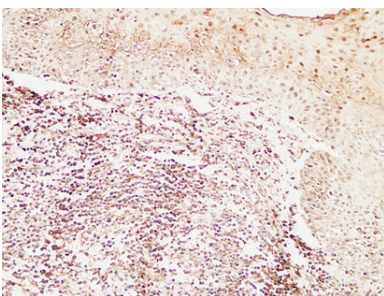
Research Area

Immunology; Adaptive Immunity; B Cells; Non-CD; Epigenetics and Nuclear Signaling; Transcription; Domain Families; Developmental Families; POU

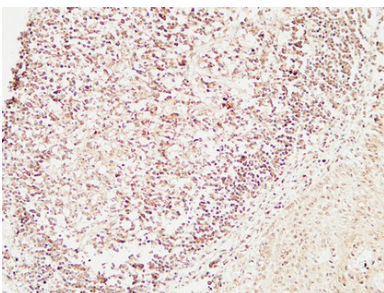
Image Data



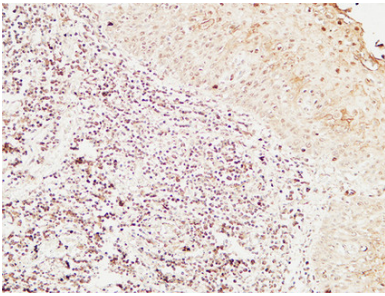
Immunohistochemical analysis of paraffin-embedded human-colon, antibody was diluted at 1:200



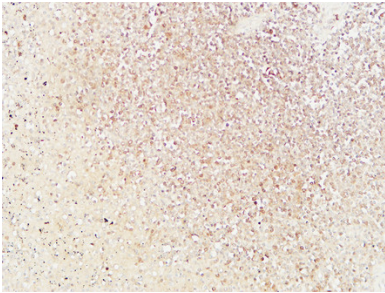
Immunohistochemical analysis of paraffin-embedded Human Amygdala. 1, Antibody was diluted at 1:200 (4°,overnight) . 2, High-pressure and temperature EDTA, pH8.0 was used for antigen retrieval. 3,Secondary antibody was diluted at 1:200 (room temperature, 30min) .



Immunohistochemical analysis of paraffin-embedded Human Amygdala. 1, Antibody was diluted at 1:200 (4°,overnight) . 2, High-pressure and temperature EDTA, pH8.0 was used for antigen retrieval. 3,Secondary antibody was diluted at 1:200 (room temperature, 30min) .



Immunohistochemical analysis of paraffin-embedded Human Amygdala. 1, Antibody was diluted at 1:200 (4°,overnight) . 2, High-pressure and temperature EDTA, pH8.0 was used for antigen retrieval. 3,Secondary antibody was diluted at 1:200 (room temperature, 30min) .



Immunohistochemical analysis of paraffin-embedded Human spleen. 1, Antibody was diluted at 1:200 (4°,overnight) . 2, High-pressure and temperature EDTA, pH8.0 was used for antigen retrieval. 3,Secondary antibody was diluted at 1:200 (room temperature, 30min) .