

Product Name: BMP-8B Rabbit Polyclonal Antibody**Catalog #: APRab07605**

For research use only.

Summary

Description	Rabbit polyclonal Antibody
Host	Rabbit
Application	WB,ELISA
Reactivity	Human,Rat,Mouse
Conjugation	Unconjugated
Modification	Unmodified
Isotype	IgG
Clonality	Polyclonal
Form	Liquid
Concentration	1mg/ml
Storage	Aliquot and store at -20°C (valid for 12 months). Avoid freeze/thaw cycles.
Shipping	Ice bags
Buffer	Liquid in PBS containing 50% glycerol, 0.5% protective protein and 0.02% New type preservative N.
Purification	Affinity purification

Application

Dilution Ratio	WB 1:500-1:2000,ELISA 1:20000-1:40000
Molecular Weight	45kDa

Antigen Information

Gene Name	BMP8B
Alternative Names	BMP8B; BMP8; Bone morphogenetic protein 8B; BMP-8; BMP-8B; Osteogenic protein 2; OP-2
Gene ID	656.0
SwissProt ID	P34820
Immunogen	The antiserum was produced against synthesized peptide derived from human BMP8B. AA range:261-310

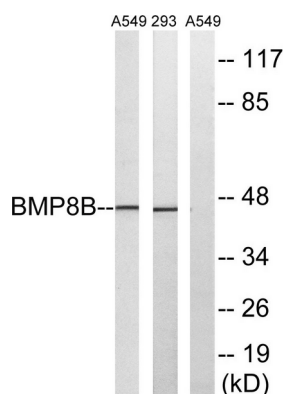
Background

This gene encodes a secreted ligand of the TGF-beta (transforming growth factor-beta) superfamily of proteins. Ligands of this family bind various TGF-beta receptors leading to recruitment and activation of SMAD family transcription factors that regulate gene expression. The encoded preproprotein is proteolytically processed to generate each subunit of the disulfide-linked homodimer. The encoded protein stimulates thermogenesis in brown adipose tissue. Expression of this gene may be downregulated in pancreatic cancer. This gene may have arose from a gene duplication event and its gene duplicate is also present on chromosome 1. [provided by RefSeq, Jul 2016],function:Induces cartilage and bone formation. May be the osteoinductive factor responsible for the phenomenon of epithelial osteogenesis. Plays a role in calcium regulation and bone homeostasis.,online information:Bone morphogenetic protein 8b entry,similarity:Belongs to the TGF-beta family.,subunit:Homodimer; disulfide-linked.,

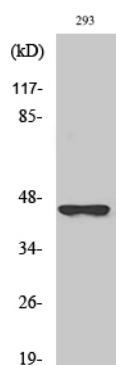
Research Area

Hedgehog;TGF-beta;

Image Data



Western blot analysis of lysates from 293 and A549 cells, using BMP8B Antibody. The lane on the right is blocked with the synthesized peptide.



Western Blot analysis of various cells using BMP-8B Polyclonal Antibody diluted at 1 : 2000