
Product Name: BinCARD Rabbit Polyclonal Antibody**Catalog #: APRab07567**

For research use only.

Summary

Description	Rabbit polyclonal Antibody
Host	Rabbit
Application	IHC,ICC/IF,ELISA
Reactivity	Human,Mouse
Conjugation	Unconjugated
Modification	Unmodified
Isotype	IgG
Clonality	Polyclonal
Form	Liquid
Concentration	1mg/ml
Storage	Aliquot and store at -20°C (valid for 12 months). Avoid freeze/thaw cycles.
Shipping	Ice bags
Buffer	Liquid in PBS containing 50% glycerol, 0.5% protective protein and 0.02% New type preservative N.
Purification	Affinity purification

Application

Dilution Ratio IHC 1:100-1:300,ICC/IF 1:50-1:200,ELISA 1:20000-1:40000

Molecular Weight

Antigen Information

Gene Name	C9orf89
Alternative Names	C9orf89; Bcl10-interacting CARD protein; BinCARD
Gene ID	84270.0
SwissProt ID	Q96LW7
Immunogen	The antiserum was produced against synthesized peptide derived from human C9orf89. AA range:21-70

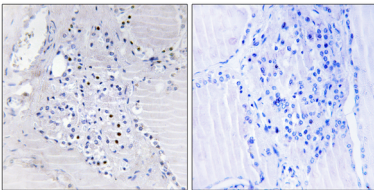
Background

function:Plays a role in inhibiting the effects of BCL10-induced activation of NF-kappa-B. May inhibit the phosphorylation of

BCL10 in a CARD-dependent manner.,PTM:Isoform 2 is phosphorylated upon DNA damage, probably by ATM or ATR.,similarity:Contains 1 CARD domain.,subcellular location:Co-expression with BCL10 induced translocation from nucleus to cytosol.,subunit:Associates with BCL10 by CARD-CARD interaction.,tissue specificity:Expressed in ovary, testis, placenta, skeletal muscle, kidney, lung, heart and liver (at protein level). Expressed in thymus and brain.,function:Plays a role in inhibiting the effects of BCL10-induced activation of NF-kappa-B. May inhibit the phosphorylation of BCL10 in a CARD-dependent manner.,PTM:Isoform 2 is phosphorylated upon DNA damage, probably by ATM or ATR.,similarity:Contains 1 CARD domain.,subcellular location:Co-expression with BCL10 induced translocation from nucleus to cytosol.,subunit:Associates with BCL10 by CARD-CARD interaction.,tissue specificity:Expressed in ovary, testis, placenta, skeletal muscle, kidney, lung, heart and liver (at protein level). Expressed in thymus and brain.,

Research Area

Image Data



Immunohistochemistry analysis of paraffin-embedded human thyroid gland tissue, using C9orf89 Antibody. The picture on the right is blocked with the synthesized peptide.