

**Product Name: Bek Rabbit Polyclonal Antibody****Catalog #: APRab07533**

For research use only.

**Summary**

<b>Description</b>	Rabbit polyclonal Antibody
<b>Host</b>	Rabbit
<b>Application</b>	WB,IHC,ICC/IF,ELISA
<b>Reactivity</b>	Human,Mouse,Rat
<b>Conjugation</b>	Unconjugated
<b>Modification</b>	Unmodified
<b>Isotype</b>	IgG
<b>Clonality</b>	Polyclonal
<b>Form</b>	Liquid
<b>Concentration</b>	1mg/ml
<b>Storage</b>	Aliquot and store at -20°C (valid for 12 months). Avoid freeze/thaw cycles.
<b>Shipping</b>	Ice bags
<b>Buffer</b>	Liquid in PBS containing 50% glycerol, 0.5% protective protein and 0.02% New type preservative N.
<b>Purification</b>	Affinity purification

**Application**

<b>Dilution Ratio</b>	WB 1:500-1:2000,IHC 1:100-1:300,ICC/IF 1:200-1:1000,ELISA 1:5000-1:20000
<b>Molecular Weight</b>	120kDa

**Antigen Information**

<b>Gene Name</b>	FGFR2
<b>Alternative Names</b>	FGFR2; BEK; KGFR; KSAM; Fibroblast growth factor receptor 2; FGFR-2; K-sam; KGFR; Keratinocyte growth factor receptor; CD antigen CD332
<b>Gene ID</b>	2263.0
<b>SwissProt ID</b>	P21802
<b>Immunogen</b>	The antiserum was produced against synthesized peptide derived from human FGFR2. AA range:471-520

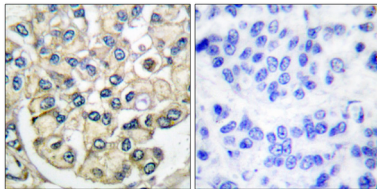
**Background**

The protein encoded by this gene is a member of the fibroblast growth factor receptor family, where amino acid sequence is highly conserved between members and throughout evolution. FGFR family members differ from one another in their ligand affinities and tissue distribution. A full-length representative protein consists of an extracellular region, composed of three immunoglobulin-like domains, a single hydrophobic membrane-spanning segment and a cytoplasmic tyrosine kinase domain. The extracellular portion of the protein interacts with fibroblast growth factors, setting in motion a cascade of downstream signals, ultimately influencing mitogenesis and differentiation. This particular family member is a high-affinity receptor for acidic, basic and/or keratinocyte growth factor, depending on the isoform.

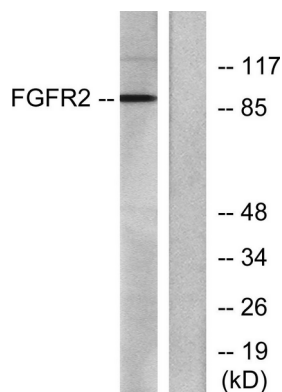
## Research Area

MAPK\_ERK\_Growth;MAPK\_G\_Protein;Endocytosis;Regulates Actin and Cytoskeleton;Pathways in cancer;Prostate cancer;

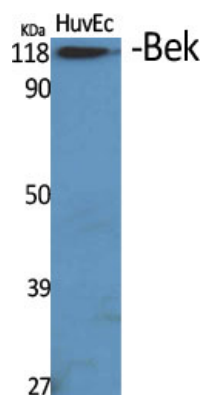
## Image Data



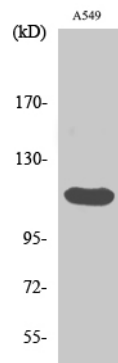
Immunohistochemistry analysis of paraffin-embedded human breast carcinoma tissue, using FGFR2 Antibody. The picture on the right is blocked with the synthesized peptide.



Western blot analysis of lysates from A549 cells, using FGFR2 Antibody. The lane on the right is blocked with the synthesized peptide.



Western Blot analysis of various cells using Bek Polyclonal Antibody



Western Blot analysis of A549 cells using Bek Polyclonal Antibody