

**Product Name: BEGAIN Rabbit Polyclonal Antibody****Catalog #: APRab07532**

For research use only.

**Summary**

<b>Description</b>	Rabbit polyclonal Antibody
<b>Host</b>	Rabbit
<b>Application</b>	WB,IHC,ICC/IF,ELISA
<b>Reactivity</b>	Human,Mouse,Rat
<b>Conjugation</b>	Unconjugated
<b>Modification</b>	Unmodified
<b>Isotype</b>	IgG
<b>Clonality</b>	Polyclonal
<b>Form</b>	Liquid
<b>Concentration</b>	1mg/ml
<b>Storage</b>	Aliquot and store at -20°C (valid for 12 months). Avoid freeze/thaw cycles.
<b>Shipping</b>	Ice bags
<b>Buffer</b>	Liquid in PBS containing 50% glycerol, 0.5% protective protein and 0.02% New type preservative N.
<b>Purification</b>	Affinity purification

**Application**

<b>Dilution Ratio</b>	WB 1:500-1:2000,IHC 1:100-1:300,ICC/IF 1:200-1:1000,ELISA 1:5000-1:10000
<b>Molecular Weight</b>	65kDa

**Antigen Information**

<b>Gene Name</b>	BEGAIN
<b>Alternative Names</b>	BEGAIN; KIAA1446; Brain-enriched guanylate kinase-associated protein
<b>Gene ID</b>	57596.0
<b>SwissProt ID</b>	Q9BUH8
<b>Immunogen</b>	The antiserum was produced against synthesized peptide derived from human BEGIN. AA range:511-560

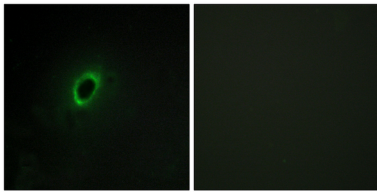
**Background**

function:May sustain the structure of the postsynaptic density (PSD).,PTM:Phosphorylated upon DNA damage, probably by

ATM or ATR,subunit:Interacts with DLG4 and DLGAP1 and forms a ternary complex.,function:May sustain the structure of the postsynaptic density (PSD),PTM:Phosphorylated upon DNA damage, probably by ATM or ATR,subunit:Interacts with DLG4 and DLGAP1 and forms a ternary complex.,

## Research Area

## Image Data



Immunofluorescence analysis of HeLa cells, using BEGIN Antibody. The picture on the right is blocked with the synthesized peptide.