

**Product Name: BD1L1 Rabbit Polyclonal Antibody****Catalog #: APRab07522**

For research use only.

**Summary**

<b>Description</b>	Rabbit polyclonal Antibody
<b>Host</b>	Rabbit
<b>Application</b>	IHC, ICC/IF
<b>Reactivity</b>	Human, Rat, Mouse
<b>Conjugation</b>	Unconjugated
<b>Modification</b>	Unmodified
<b>Isotype</b>	IgG
<b>Clonality</b>	Polyclonal
<b>Form</b>	Liquid
<b>Concentration</b>	1mg/ml
<b>Storage</b>	Aliquot and store at -20°C (valid for 12 months). Avoid freeze/thaw cycles.
<b>Shipping</b>	Ice bags
<b>Buffer</b>	Liquid in PBS containing 50% glycerol, and 0.02% New type preservative N.
<b>Purification</b>	Affinity purification

**Application**

<b>Dilution Ratio</b>	IHC 1:50-1:300, ICC/IF 1:50-1:200
<b>Molecular Weight</b>	335kDa

**Antigen Information**

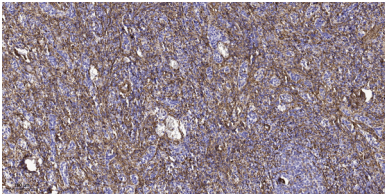
<b>Gene Name</b>	BOD1L1
<b>Alternative Names</b>	BOD1L FAM44A KIAA1327
<b>Gene ID</b>	259282.0
<b>SwissProt ID</b>	Q8NFC6
<b>Immunogen</b>	Synthesized peptide derived from human protein . at AA range: 1280-1360

**Background**

Component of the fork protection machinery required to protect stalled/damaged replication forks from uncontrolled DNA2-dependent resection. Acts by stabilizing RAD51 at stalled replication forks and protecting RAD51 nucleofilaments from the antirecombinogenic activities of FBXO18/FBH1 and BLM.

## Research Area

### Image Data



Immunohistochemical analysis of paraffin-embedded human spleen tissue. 1,BD1L1 Rabbit Polyclonal Antibody was diluted at 1:200 (4° overnight) . 2, Sodium citrate pH 6.0 was used for antigen retrieval (>98°C,20min) . 3,Secondary antibody was diluted at 1:219 (room temperature,45min)