
Product Name: BCL7B Rabbit Polyclonal Antibody**Catalog #: APRab07511**

For research use only.

Summary

Description	Rabbit polyclonal Antibody
Host	Rabbit
Application	WB,ELISA
Reactivity	Human,Mouse
Conjugation	Unconjugated
Modification	Unmodified
Isotype	IgG
Clonality	Polyclonal
Form	Liquid
Concentration	1mg/ml
Storage	Aliquot and store at -20°C (valid for 12 months). Avoid freeze/thaw cycles.
Shipping	Ice bags
Buffer	Liquid in PBS containing 50% glycerol, and 0.02% New type preservative N.
Purification	Affinity purification

Application

Dilution Ratio	WB 1:500-1:2000,ELISA 1:5000-1:20000
Molecular Weight	22kDa

Antigen Information

Gene Name	BCL7B
Alternative Names	
Gene ID	9275.0
SwissProt ID	Q9BQE9
Immunogen	Synthesized peptide derived from part region of human protein

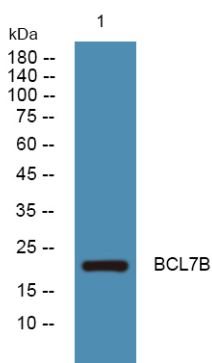
Background

This gene encodes a member of the BCL7 family including BCL7A, BCL7B and BCL7C proteins. This member is BCL7B, which contains a region that is highly similar to the N-terminal segment of BCL7A or BCL7C proteins. The BCL7A protein is encoded by the gene known to be directly involved in a three-way gene translocation in a Burkitt lymphoma cell line. This gene is located at

a chromosomal region commonly deleted in Williams syndrome. This gene is highly conserved from *C. elegans* to human. Multiple alternatively spliced transcript variants have been found for this gene. [provided by RefSeq, Oct 2010],allergen:Causes an allergic reaction in human. Binds to IgE from atopic dermatitis (AD) patients. Identified as an IgE autoantigen in atopic dermatitis (AD) patients with severe skin manifestations.,disease:Haploinsufficiency of BCL7B may be the cause of certain cardiovascular and musculo-skeletal abnormalities observed in Williams-Beuren syndrome (WBS) [MIM:194050]. WBS is a rare developmental disorder. It is a contiguous gene deletion syndrome involving genes from chromosome band 7q11.23.,function:May play a role in lung tumor development or progression.,similarity:Belongs to the BCL7 family.,tissue specificity:Ubiquitous.,

Research Area

Image Data



Western blot analysis of lysates from K562 cells, BCL7B Rabbit Polyclonal Antibody was diluted at 1:1000, 4° over night