

Product Name: BCKDK Rabbit Polyclonal Antibody**Catalog #: APRab07494**

For research use only.

Summary

Description	Rabbit polyclonal Antibody
Host	Rabbit
Application	WB,IHC,ICC/IF,ELISA
Reactivity	Human,Mouse,Rat
Conjugation	Unconjugated
Modification	Unmodified
Isotype	IgG
Clonality	Polyclonal
Form	Liquid
Concentration	1mg/ml
Storage	Aliquot and store at -20°C (valid for 12 months). Avoid freeze/thaw cycles.
Shipping	Ice bags
Buffer	Liquid in PBS containing 50% glycerol, 0.5% protective protein and 0.02% New type preservative N.
Purification	Affinity purification

Application

Dilution Ratio	WB 1:500-1:2000,IHC 1:100-1:300,ICC/IF 1:200-1:1000,ELISA 1:10000-1:20000
Molecular Weight	46kDa

Antigen Information

Gene Name	BCKDK
Alternative Names	BCKDK; [3-methyl-2-oxobutanoate dehydrogenase [lipoamide]] kinase; mitochondrial; Branched-chain alpha-ketoacid dehydrogenase kinase; BCKD-kinase; BCKDHKIN
Gene ID	10295.0
SwissProt ID	O14874
Immunogen	The antiserum was produced against synthesized peptide derived from human BCKD . AA range:11-60

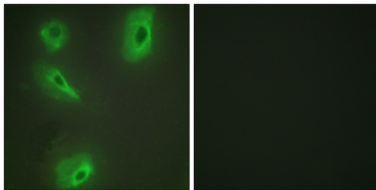
Background

The branched-chain alpha-ketoacid dehydrogenase complex (BCKD) is an important regulator of the valine, leucine, and isoleucine catabolic pathways. The protein encoded by this gene is found in the mitochondrion, where it phosphorylates and inactivates BCKD. Several transcript variants encoding different isoforms have been found for this gene. [provided by RefSeq, Dec 2012],catalytic activity:ATP + [3-methyl-2-oxobutanoate dehydrogenase (acetyl-transferring)] = ADP + [3-methyl-2-oxobutanoate dehydrogenase (acetyl-transferring)] phosphate.,function:Catalyzes the phosphorylation and inactivation of the branched-chain alpha-ketoacid dehydrogenase complex, the key regulatory enzyme of the valine, leucine and isoleucine catabolic pathways. Key enzyme that regulate the activity state of the BCKD complex.,PTM:Autophosphorylated.,similarity:Belongs to the PDK/BCKDK protein kinase family.,similarity:Contains 1 histidine kinase domain.,subunit:Monomer.,tissue specificity:Ubiquitous.,

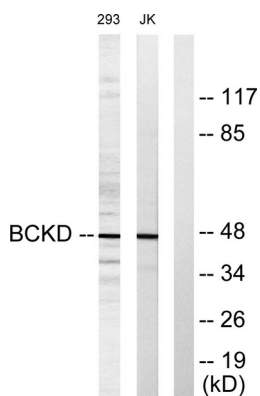
Research Area

Tags & Cell Markers; Subcellular Markers; Organelles; Mitochondria; Signal Transduction; Metabolism; Amino Acids; Mitochondrial; Metabolism; Pathways and Processes; Mitochondrial Metabolism; Mitochondrial markers; Amino acid metabolism

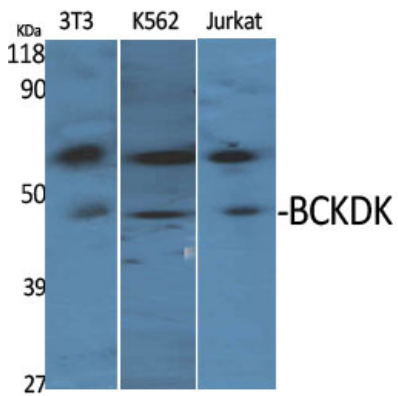
Image Data



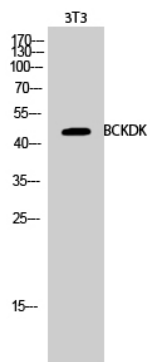
Immunofluorescence analysis of HeLa cells, using BCKD Antibody . The picture on the right is blocked with the synthesized peptide.



Western blot analysis of lysates from Jurkat and 293 cells, using BCKD Antibody . The lane on the right is blocked with the synthesized peptide.



Western Blot analysis of various cells using BCKDK Polyclonal Antibody



Western Blot analysis of 3T3 cells using BCKDK Polyclonal Antibody