

Product Name: BCA3 Rabbit Polyclonal Antibody**Catalog #: APRab07485**

For research use only.

Summary

Description	Rabbit polyclonal Antibody
Host	Rabbit
Application	WB,IHC,ICC/IF,ELISA
Reactivity	Human,Rat,Mouse
Conjugation	Unconjugated
Modification	Unmodified
Isotype	IgG
Clonality	Polyclonal
Form	Liquid
Concentration	1mg/ml
Storage	Aliquot and store at -20°C (valid for 12 months). Avoid freeze/thaw cycles.
Shipping	Ice bags
Buffer	Liquid in PBS containing 50% glycerol, 0.5% protective protein and 0.02% New type preservative N.
Purification	Affinity purification

Application

Dilution Ratio	WB 1:500-1:2000,IHC 1:100-1:300,ICC/IF 1:50-1:200,ELISA 1:10000-1:20000
Molecular Weight	26kDa

Antigen Information

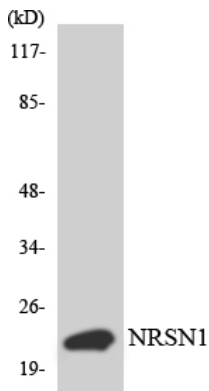
Gene Name	AKIP1
Alternative Names	AKIP1; BCA3; C11orf17; A-kinase-interacting protein 1; Breast cancer-associated gene 3 protein; PKA-interacting protein; Proline-rich protein BCA3
Gene ID	56672.0
SwissProt ID	Q9NQ31
Immunogen	The antiserum was produced against synthesized peptide derived from human BCA3. AA range:111-160

Background

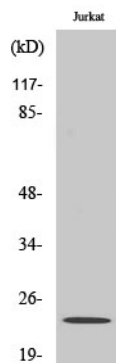
This gene encodes a nuclear protein that interacts with protein kinase A catalytic subunit, and regulates the effect of the cAMP-dependent protein kinase signaling pathway on the NF-kappa-B activation cascade. Alternatively spliced transcript variants have been described for this gene. [provided by RefSeq, Oct 2011],subcellular location:Locates to punctate spots.,subunit:Interacts with PRKACA.,tissue specificity:Expressed at high levels in adult heart and at lower levels in brain, testis, ovary and skeletal muscle. Up-regulated in some breast cancer cell lines. Isoform 1 and isoform 3 are expressed in fetal brain.,

Research Area

Image Data



Western blot analysis of the lysates from HepG2 cells using BCA3 antibody.



Western Blot analysis of various cells using BCA3 Polyclonal Antibody cells nucleus extracted by Minute TM Cytoplasmic and Nuclear Fractionation kit (SC-003, Invent biotech, MN, USA) .