
Product Name: BATF3 Rabbit Polyclonal Antibody**Catalog #: APRab07472**

For research use only.

Summary

Description	Rabbit polyclonal Antibody
Host	Rabbit
Application	WB,IHC,ICC/IF,ELISA
Reactivity	Human,Mouse,Rat
Conjugation	Unconjugated
Modification	Unmodified
Isotype	IgG
Clonality	Polyclonal
Form	Liquid
Concentration	1mg/ml
Storage	Aliquot and store at -20°C (valid for 12 months). Avoid freeze/thaw cycles.
Shipping	Ice bags
Buffer	Liquid in PBS containing 50% glycerol, 0.5% protective protein and 0.02% New type preservative N.
Purification	Affinity purification

Application

Dilution Ratio	WB 1:500-1:2000,IHC 1:100-1:300,ICC/IF 1:50-1:200,ELISA 1:5000-1:20000
Molecular Weight	15kDa

Antigen Information

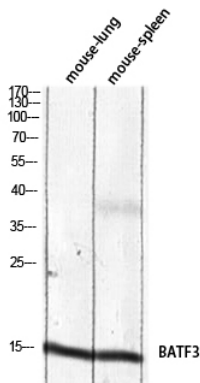
Gene Name	BATF3
Alternative Names	BATF3; SNFT; Basic leucine zipper transcriptional factor ATF-like 3; B-ATF-3; 21 kDa small nuclear factor isolated from T-cells; Jun dimerization protein p21SNFT
Gene ID	55509.0
SwissProt ID	Q9NR55
Immunogen	The antiserum was produced against synthesized peptide derived from the Internal region of human BATF3. AA range:1-50

Background

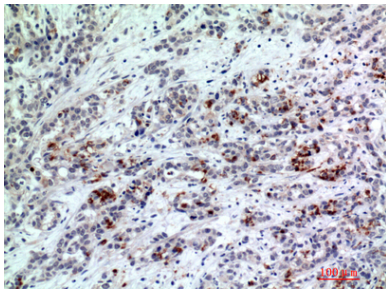
This gene encodes a member of the basic leucine zipper protein family. The encoded protein functions as a transcriptional repressor when heterodimerizing with JUN. The protein may play a role in repression of interleukin-2 and matrix metalloproteinase-1 transcription.[provided by RefSeq, Feb 2009],function:Functions as a negative regulator of AP-1-mediated transcription by heterodimerizing with JUN and binding DNA at 12-O-tetradecanoylphorbol-13-acetate response elements (TRE) (consensus: 5'-TGA[CG]TCA-3'). Represses IL2 and MMP1 promoter activities.,similarity:Belongs to the bZIP family.,similarity:Contains 1 bZIP domain.,subunit:Interacts with JUN.,

Research Area

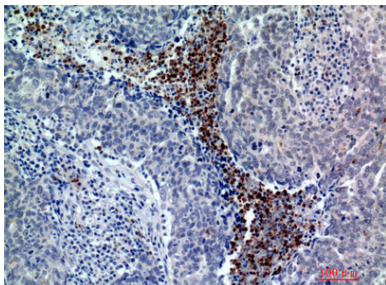
Image Data



Western blot analysis of mouse-lung mouse-spleen lysis using BATF3 antibody. Antibody was diluted at 1:2000. Secondary antibody was diluted at 1:20000.



Immunohistochemical analysis of paraffin-embedded human-breast-cancer, antibody was diluted at 1:200



Immunohistochemical analysis of paraffin-embedded human-breast-cancer, antibody was diluted at 1:200