
Product Name: B-ATF Rabbit Polyclonal Antibody**Catalog #: APRab07470**

For research use only.

Summary

Description	Rabbit polyclonal Antibody
Host	Rabbit
Application	IHC,ICC/IF,ELISA
Reactivity	Human,Mouse
Conjugation	Unconjugated
Modification	Unmodified
Isotype	IgG
Clonality	Polyclonal
Form	Liquid
Concentration	1mg/ml
Storage	Aliquot and store at -20°C (valid for 12 months). Avoid freeze/thaw cycles.
Shipping	Ice bags
Buffer	Liquid in PBS containing 50% glycerol, 0.5% protective protein and 0.02% New type preservative N.
Purification	Affinity purification

Application

Dilution Ratio IHC 1:100-1:300,ICC/IF 1:50-1:200,ELISA 1:5000-1:10000

Molecular Weight

Antigen Information

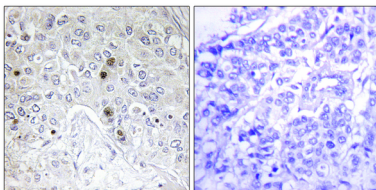
Gene Name	BATF
Alternative Names	BATF; Basic leucine zipper transcriptional factor ATF-like; B-cell-activating transcription factor; B-ATF; SF-HT-activated gene 2 protein; SFA-2
Gene ID	10538.0
SwissProt ID	Q16520
Immunogen	The antiserum was produced against synthesized peptide derived from human BATF. AA range:10-59

Background

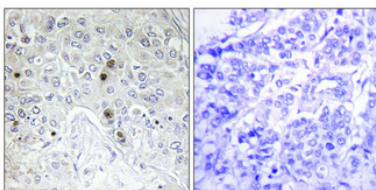
The protein encoded by this gene is a nuclear basic leucine zipper protein that belongs to the AP-1/ATF superfamily of transcription factors. The leucine zipper of this protein mediates dimerization with members of the Jun family of proteins. This protein is thought to be a negative regulator of AP-1/ATF transcriptional events. [provided by RefSeq, Jul 2008],function:Functions as a negative regulator of AP-1 mediated transcription by binding to Jun proteins. Jun/B-ATF heterodimers bind DNA preferentially at the 12-O-tetradecanoylphorbol-13-acetate response element (TRE) (consensus: 5'-TGA[CG]TCA-3') and weaker at the cAMP-responsive region (CRE) (consensus: 5'-GTGACGT[AC][AG]-3'), but are transcriptionally inert.,PTM:Phosphorylated.,similarity:Belongs to the bZIP family.,similarity:Contains 1 bZIP domain.,subunit:Forms heterodimers with JUN, JUNB and JUND. Also interacts with IFI35.,tissue specificity:Expressed at highest levels in lung, and at lower levels in placenta, liver, kidney, spleen, and peripheral blood. Detected in SW480 colorectal cancer cell line and several hematopoietic tumor cell lines, including Raji Burkitt's lymphoma. Strongly expressed in mature B- and T-lymphocytes. According to PubMed:10777209 also expressed in moderate levels in lymph node and appendix and at low levels in thymus and bone marrow.,

Research Area

Image Data



Immunohistochemistry analysis of paraffin-embedded human breast carcinoma tissue, using BATF Antibody. The picture on the right is blocked with the synthesized peptide.



Immunohistochemical analysis of paraffin-embedded Human breast cancer. Antibody was diluted at 1:100 (4°,overnight) . High-pressure and temperature Tris-EDTA,pH8.0 was used for antigen retrieval. Negative contrl (right) obtained from antibody was pre-absorbed by immunogen peptide.