

Product Name: AVPR1A Rabbit Polyclonal Antibody**Catalog #: APRab07383**

For research use only.

Summary

Description	Rabbit polyclonal Antibody
Host	Rabbit
Application	WB,ELISA
Reactivity	Human,Mouse
Conjugation	Unconjugated
Modification	Unmodified
Isotype	IgG
Clonality	Polyclonal
Form	Liquid
Concentration	1mg/ml
Storage	Aliquot and store at -20°C (valid for 12 months). Avoid freeze/thaw cycles.
Shipping	Ice bags
Buffer	Liquid in PBS containing 50% glycerol, 0.5% protective protein and 0.02% New type preservative N.
Purification	Affinity purification

Application

Dilution Ratio	WB 1:500-1:2000,ELISA 1:10000-1:20000
Molecular Weight	55kDa

Antigen Information

Gene Name	AVPR1A
Alternative Names	Vasopressin V1a receptor (V1aR) (AVPR V1a) (Antidiuretic hormone receptor 1a) (Vascular/hepatic-type arginine vasopressin receptor)
Gene ID	552.0
SwissProt ID	P37288
Immunogen	Synthesized peptide derived from human AVPR1A. at AA range: 11-60

Background

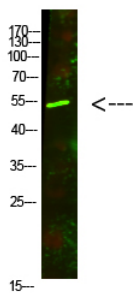
The protein encoded by this gene acts as receptor for arginine vasopressin. This receptor belongs to the subfamily of G-protein

coupled receptors which includes AVPR1B, V2R and OXT receptors. Its activity is mediated by G proteins which stimulate a phosphatidylinositol-calcium second messenger system. The receptor mediates cell contraction and proliferation, platelet aggregation, release of coagulation factor and glycogenolysis. [provided by RefSeq, Jul 2008],function:Receptor for arginine vasopressin. The activity of this receptor is mediated by G proteins which activate a phosphatidyl-inositol-calcium second messenger system. Has been involved in social behaviors, including affiliation and attachment.,miscellaneous:Differences in regional receptor expression in the brain as well as differences in social behavior may result from a highly variable repetitive sequence in the 5' flanking region of AVPR1A. One such allelic variant has been linked to autism.,similarity:Belongs to the G-protein coupled receptor 1 family.,

Research Area

Calcium;Neuroactive ligand-receptor interaction;Vascular smooth muscle contraction;

Image Data



Western Blot analysis of mouse-lung cells using AVPR1A Rabbit Polyclonal Antibody diluted at 1:500 (4°C overnight) . Secondary antibody: Goat Anti-rabbit IgG IRDye 800 (diluted at 1:5000, 25°C, 1 hour)