

Product Name: AVP Receptor V3 Rabbit Polyclonal Antibody**Catalog #: APRab07381**

For research use only.

Summary

Description	Rabbit polyclonal Antibody
Host	Rabbit
Application	IHC, ICC/IF, ELISA
Reactivity	Human, Mouse, Rat
Conjugation	Unconjugated
Modification	Unmodified
Isotype	IgG
Clonality	Polyclonal
Form	Liquid
Concentration	1mg/ml
Storage	Aliquot and store at -20°C (valid for 12 months). Avoid freeze/thaw cycles.
Shipping	Ice bags
Buffer	Liquid in PBS containing 50% glycerol, 0.5% protective protein and 0.02% New type preservative N.
Purification	Affinity purification

Application

Dilution Ratio IHC 1:50-1:200, ICC/IF 1:50-1:200, ELISA 1:10000-1:20000

Molecular Weight

Antigen Information

Gene Name	AVPR1B AVPR3 VPR3
Alternative Names	Vasopressin V1b receptor (V1bR; AVPR V1b; AVPR V3; Antidiuretic hormone receptor 1b; Vasopressin V3 receptor)
Gene ID	553.0
SwissProt ID	P47901
Immunogen	The antiserum was produced against synthesized peptide derived from the Internal region of human AVPR1B. AA range: 271-320

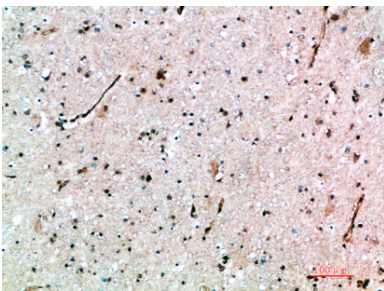
Background

The protein encoded by this gene acts as receptor for arginine vasopressin. This receptor belongs to the subfamily of G-protein coupled receptors which includes AVPR1A, V2R and OXT receptors. Its activity is mediated by G proteins which stimulate a phosphatidylinositol-calcium second messenger system. The receptor is primarily located in the anterior pituitary, where it stimulates ACTH release. It is expressed at high levels in ACTH-secreting pituitary adenomas as well as in bronchial carcinoids responsible for the ectopic ACTH syndrome. A spliced antisense transcript of this gene has been reported but its function is not known. [provided by RefSeq, Jul 2008],function:Receptor for arginine vasopressin. The activity of this receptor is mediated by G proteins which activate a phosphatidyl-inositol-calcium second messenger system.,similarity:Belongs to the G-protein coupled receptor 1 family.,

Research Area

Calcium;Neuroactive ligand-receptor interaction;Vascular smooth muscle contraction;

Image Data



Immunohistochemical analysis of paraffin-embedded human-brain, antibody was diluted at 1:200