
Product Name: Aven Rabbit Polyclonal Antibody**Catalog #: APRab07377**

For research use only.

Summary

Description	Rabbit polyclonal Antibody
Host	Rabbit
Application	WB,IHC,ICC/IF,ELISA
Reactivity	Human,Monkey
Conjugation	Unconjugated
Modification	Unmodified
Isotype	IgG
Clonality	Polyclonal
Form	Liquid
Concentration	1mg/ml
Storage	Aliquot and store at -20°C (valid for 12 months). Avoid freeze/thaw cycles.
Shipping	Ice bags
Buffer	Liquid in PBS containing 50% glycerol, 0.5% protective protein and 0.02% New type preservative N.
Purification	Affinity purification

Application

Dilution Ratio	WB 1:500-1:2000,IHC 1:100-1:300,ICC/IF 1:200-1:1000,ELISA 1:10000-1:20000
Molecular Weight	55kDa

Antigen Information

Gene Name	AVEN
Alternative Names	AVEN; Cell death regulator Aven
Gene ID	57099.0
SwissProt ID	Q9NQS1
Immunogen	The antiserum was produced against synthesized peptide derived from human AVEN. AA range:301-350

Background

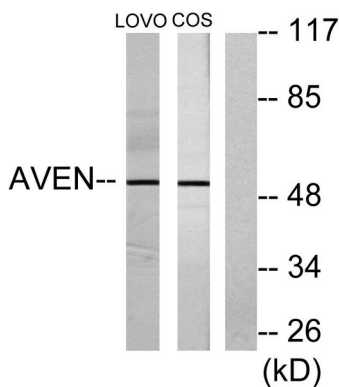
function:Protects against apoptosis mediated by Apaf-1.,subcellular location:Associated with intracellular

membranes.,subunit: Binds Apaf-1, BCL-2 and BAD (Bcl-xl).,tissue specificity: Highly expressed in testis, ovary, thymus, prostate, spleen, small intestine, colon, heart, skeletal muscle, liver, kidney and pancreas.,function: Protects against apoptosis mediated by Apaf-1.,subcellular location: Associated with intracellular membranes.,subunit: Binds Apaf-1, BCL-2 and BAD (Bcl-xl).,tissue specificity: Highly expressed in testis, ovary, thymus, prostate, spleen, small intestine, colon, heart, skeletal muscle, liver, kidney and pancreas.,

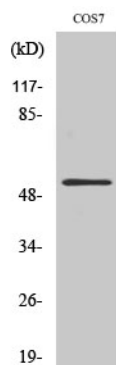
Research Area

Cell Biology

Image Data



Western blot analysis of lysates from COS7 and LOVO cells, using AVEN Antibody. The lane on the right is blocked with the synthesized peptide.



Western Blot analysis of various cells using Aven Polyclonal Antibody