
Product Name: ATP1AL1 Rabbit Polyclonal Antibody**Catalog #: APRab07319**

For research use only.

Summary

Description	Rabbit polyclonal Antibody
Host	Rabbit
Application	WB,ELISA
Reactivity	Human,Rat
Conjugation	Unconjugated
Modification	Unmodified
Isotype	IgG
Clonality	Polyclonal
Form	Liquid
Concentration	1mg/ml
Storage	Aliquot and store at -20°C (valid for 12 months). Avoid freeze/thaw cycles.
Shipping	Ice bags
Buffer	Liquid in PBS containing 50% glycerol, 0.5% protective protein and 0.02% New type preservative N.
Purification	Affinity purification

Application

Dilution Ratio	WB 1:500-1:2000,ELISA 1:10000-1:20000
Molecular Weight	115kDa

Antigen Information

Gene Name	ATP12A
Alternative Names	ATP12A; ATP1AL1; Potassium-transporting ATPase alpha chain 2; Non-gastric H(+)/K(+) ATPase subunit alpha; Proton pump
Gene ID	479.0
SwissProt ID	P54707
Immunogen	Synthesized peptide derived from ATP1AL1 . at AA range: 380-460

Background

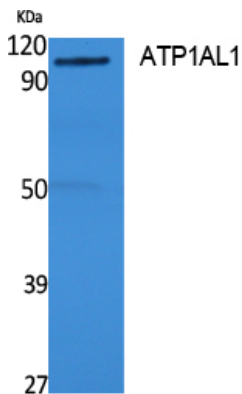
The protein encoded by this gene belongs to the family of P-type cation transport ATPases. This gene encodes a catalytic

subunit of the ouabain-sensitive H⁺/K⁺ -ATPase that catalyzes the hydrolysis of ATP coupled with the exchange of H⁽⁺⁾ and K⁽⁺⁾ ions across the plasma membrane. It is also responsible for potassium absorption in various tissues. Two transcript variants encoding different isoforms have been found for this gene. [provided by RefSeq, Jun 2010],catalytic activity:ATP + H₂O + H⁽⁺⁾(In) + K⁽⁺⁾(Out) = ADP + phosphate + H⁽⁺⁾(Out) + K⁽⁺⁾(In),function:Catalyzes the hydrolysis of ATP coupled with the exchange of H⁽⁺⁾ and K⁽⁺⁾ ions across the plasma membrane. Responsible for potassium absorption in various tissues.,similarity:Belongs to the cation transport ATPase (P-type) family. Type IIC subfamily.,subunit:Composed of two subunits: alpha (catalytic) and beta.,tissue specificity:Found in skin and kidney.,

Research Area

Oxidative phosphorylation;

Image Data



Western Blot analysis of extracts from rat stomach, using ATP1AL1 Polyclonal Antibody.. Secondary antibody was diluted at 1:20000