
Product Name: Atm Rabbit Polyclonal Antibody**Catalog #: APRab07311**

For research use only.

Summary

Description	Rabbit polyclonal Antibody
Host	Rabbit
Application	WB,IHC,ICC/IF,ELISA
Reactivity	Human,Mouse
Conjugation	Unconjugated
Modification	Unmodified
Isotype	IgG
Clonality	Polyclonal
Form	Liquid
Concentration	1mg/ml
Storage	Aliquot and store at -20°C (valid for 12 months). Avoid freeze/thaw cycles.
Shipping	Ice bags
Buffer	Liquid in PBS containing 50% glycerol, 0.5% protective protein and 0.02% New type preservative N.
Purification	Affinity purification

Application

Dilution Ratio	WB 1:500-1:2000,IHC 1:100-1:300,ICC/IF 1:50-1:200,ELISA 1:20000-1:40000
Molecular Weight	350kDa

Antigen Information

Gene Name	ATM
Alternative Names	ATM; Serine-protein kinase ATM; Ataxia telangiectasia mutated; A-T mutated
Gene ID	472.0
SwissProt ID	Q13315
Immunogen	The antiserum was produced against synthesized peptide derived from human ATM. AA range:1950-1999

Background

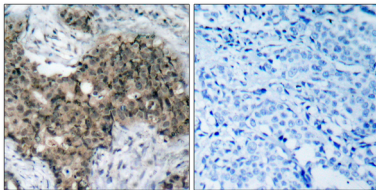
The protein encoded by this gene belongs to the PI3/PI4-kinase family. This protein is an important cell cycle checkpoint kinase

that phosphorylates; thus, it functions as a regulator of a wide variety of downstream proteins, including tumor suppressor proteins p53 and BRCA1, checkpoint kinase CHK2, checkpoint proteins RAD17 and RAD9, and DNA repair protein NBS1. This protein and the closely related kinase ATR are thought to be master controllers of cell cycle checkpoint signaling pathways that are required for cell response to DNA damage and for genome stability. Mutations in this gene are associated with ataxia telangiectasia, an autosomal recessive disorder. [provided by RefSeq, Aug 2010],catalytic activity:ATP + a protein = ADP + a phosphoprotein.,disease:Defects in ATM are the cause of ataxia telangiectasia (AT) [MIM:208900]; also known as Louis-Bar syndrome, which includes four complementation groups: A, C, D and E. This rare recessive disorder is characterized by progressive cerebellar ataxia, dilation of the blood vessels in the conjunctiva and eyeballs, immunodeficiency, growth retardation and sexual immaturity.

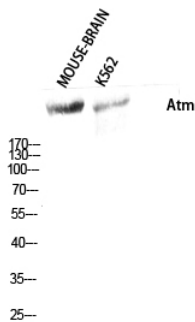
Research Area

Cell_Cycle_G1S;Cell_Cycle_G2M_DNA; NF_kappaB; Protein_Acetylation

Image Data



Immunohistochemistry analysis of paraffin-embedded human breast carcinoma tissue, using ATM Antibody. The picture on the right is blocked with the synthesized peptide.



Western Blot analysis of MOUSE-BRAIN K562 cells using Atm Polyclonal Antibody diluted at 1: 500