

---

**Product Name: Atg4b Rabbit Polyclonal Antibody****Catalog #: APRab07292**

For research use only.

**Summary**

<b>Description</b>	Rabbit polyclonal Antibody
<b>Host</b>	Rabbit
<b>Application</b>	WB,IHC,ICC/IF,ELISA
<b>Reactivity</b>	Human,Mouse
<b>Conjugation</b>	Unconjugated
<b>Modification</b>	Unmodified
<b>Isotype</b>	IgG
<b>Clonality</b>	Polyclonal
<b>Form</b>	Liquid
<b>Concentration</b>	1mg/ml
<b>Storage</b>	Aliquot and store at -20°C (valid for 12 months). Avoid freeze/thaw cycles.
<b>Shipping</b>	Ice bags
<b>Buffer</b>	Liquid in PBS containing 50% glycerol, 0.5% protective protein and 0.02% New type preservative N.
<b>Purification</b>	Affinity purification

**Application**

<b>Dilution Ratio</b>	WB 1:500-1:2000,IHC 1:100-1:300,ICC/IF 1:50-1:200,ELISA 1:10000-1:20000
<b>Molecular Weight</b>	44kDa

**Antigen Information**

<b>Gene Name</b>	ATG4B ATG4B; APG4B; AUTL1; KIAA0943; Cysteine protease ATG4B; AUT-like 1 cysteine
<b>Alternative Names</b>	endopeptidase; Autophagin-1; Autophagy-related cysteine endopeptidase 1; Autophagy-related protein 4 homolog B; hAPG4B
<b>Gene ID</b>	23192.0
<b>SwissProt ID</b>	Q9Y4P1
<b>Immunogen</b>	The antiserum was produced against synthesized peptide derived from human ATG4B. AA range:71-120

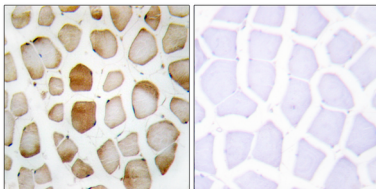
## Background

Autophagy is the process by which endogenous proteins and damaged organelles are destroyed intracellularly. Autophagy is postulated to be essential for cell homeostasis and cell remodeling during differentiation, metamorphosis, non-apoptotic cell death, and aging. Reduced levels of autophagy have been described in some malignant tumors, and a role for autophagy in controlling the unregulated cell growth linked to cancer has been proposed. This gene encodes a member of the autophagin protein family. The encoded protein is also designated as a member of the C-54 family of cysteine proteases. Alternate transcriptional splice variants, encoding different isoforms, have been characterized. [provided by RefSeq, Jul 2008],enzyme regulation:Inhibited by N-ethylmaleimide.,function:Cysteine protease required for autophagy, which cleaves the C-terminal part of either MAP1LC3, GABARAPL2 or GABARAP, allowing the liberation of form I. A subpopulation of form I is subsequently converted to a smaller form (form II). Form II, with a revealed C-terminal glycine, is considered to be the phosphatidylethanolamine (PE)-conjugated form, and has the capacity for the binding to autophagosomes.,similarity:Belongs to the peptidase C54 family.,tissue specificity:Mainly expressed in the skeletal muscle, followed by brain, heart, liver and pancreas.,

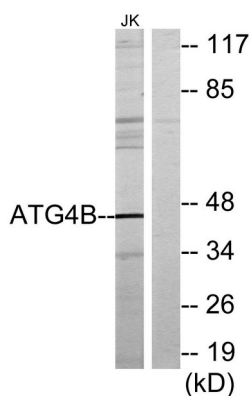
## Research Area

Regulation of autophagy;

## Image Data



Immunohistochemistry analysis of paraffin-embedded human skeletal muscle tissue, using ATG4B Antibody. The picture on the right is blocked with the synthesized peptide.



Western blot analysis of lysates from Jurkat cells, using ATG4B Antibody. The lane on the right is blocked with the synthesized peptide.

Western Blot analysis of Jurkat cells using Atg4b Polyclonal Antibody

