
Product Name: ATG10 Rabbit Polyclonal Antibody**Catalog #: APRab07282**

For research use only.

Summary

Description	Rabbit polyclonal Antibody
Host	Rabbit
Application	IHC,ICC/IF,ELISA
Reactivity	Human,Rat,Mouse
Conjugation	Unconjugated
Modification	Unmodified
Isotype	IgG
Clonality	Polyclonal
Form	Liquid
Concentration	1mg/ml
Storage	Aliquot and store at -20°C (valid for 12 months). Avoid freeze/thaw cycles.
Shipping	Ice bags
Buffer	Liquid in PBS containing 50% glycerol, 0.5% protective protein and 0.02% New type preservative N.
Purification	Affinity purification

Application

Dilution Ratio IHC 1:50-1:200,ICC/IF 1:50-1:200,ELISA 1:10000-1:20000

Molecular Weight

Antigen Information

Gene Name	ATG10 APG10L PP12616
Alternative Names	Ubiquitin-like-conjugating enzyme ATG10 (EC 6.3.2.-;Autophagy-related protein 10;APG10-like)
Gene ID	83734.0
SwissProt ID	Q9H0Y0
Immunogen	Synthetic peptide from human protein at AA range: 1-50

Background

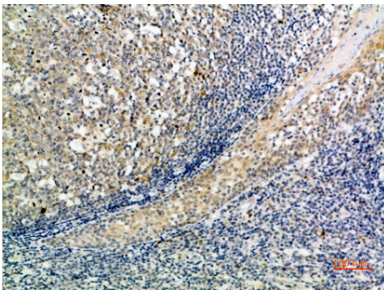
Autophagy is a process for the bulk degradation of cytosolic compartments by lysosomes. ATG10 is an E2-like enzyme involved

in 2 ubiquitin-like modifications essential for autophagosome formation: ATG12 (MIM 609608)-ATG5 (MIM 604261) conjugation and modification of a soluble form of MAP-LC3 (MAP1LC3A; MIM 601242), a homolog of yeast Apg8, to a membrane-bound form (Nemoto et al., 2003 [PubMed 12890687]).[supplied by OMIM, Mar 2008],function:Plays a role in autophagy (By similarity). ATG12-conjugating enzyme (E2-like enzyme), likely serves as an ATG5-recognition molecule.,similarity:Belongs to the ATG10 family.,subunit:Interacts with MAP1LC3A. By interacting with MAP1LC3A, it plays a role in the conjugation of ATG12 to ATG5. Also able to directly interact either with ATG5 or ATG7.,

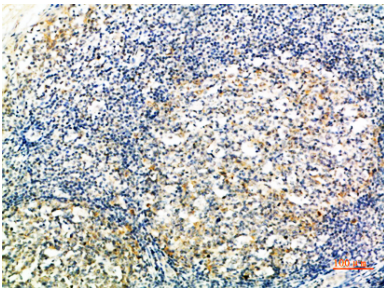
Research Area

Cell Biology

Image Data



Immunohistochemical analysis of paraffin-embedded human-tonsil, antibody was diluted at 1:200



Immunohistochemical analysis of paraffin-embedded human-tonsil, antibody was diluted at 1:200