

---

**Product Name: AR- $\alpha$ 1D Rabbit Polyclonal Antibody****Catalog #: APRab07192**

For research use only.

**Summary**

<b>Description</b>	Rabbit polyclonal Antibody
<b>Host</b>	Rabbit
<b>Application</b>	IHC,ICC/IF,ELISA
<b>Reactivity</b>	Human,Rat,Mouse
<b>Conjugation</b>	Unconjugated
<b>Modification</b>	Unmodified
<b>Isotype</b>	IgG
<b>Clonality</b>	Polyclonal
<b>Form</b>	Liquid
<b>Concentration</b>	1mg/ml
<b>Storage</b>	Aliquot and store at -20°C (valid for 12 months). Avoid freeze/thaw cycles.
<b>Shipping</b>	Ice bags
<b>Buffer</b>	Liquid in PBS containing 50% glycerol, 0.5% protective protein and 0.02% New type preservative N.
<b>Purification</b>	Affinity purification

**Application**

**Dilution Ratio** IHC 1:100-1:300,ICC/IF 1:200-1:1000,ELISA 1:10000-1:20000

**Molecular Weight**

**Antigen Information**

<b>Gene Name</b>	ADRA1D
<b>Alternative Names</b>	ADRA1D; ADRA1A; Alpha-1D adrenergic receptor; Alpha-1A adrenergic receptor; Alpha-1D adrenoreceptor; Alpha-1D adrenoceptor; Alpha-adrenergic receptor 1a
<b>Gene ID</b>	146.0
<b>SwissProt ID</b>	P25100
<b>Immunogen</b>	The antiserum was produced against synthesized peptide derived from human ADRA1D. AA range:451-500

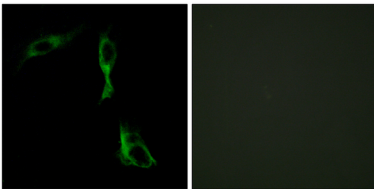
**Background**

Alpha-1-adrenergic receptors (alpha-1-ARs) are members of the G protein-coupled receptor superfamily. They activate mitogenic responses and regulate growth and proliferation of many cells. There are 3 alpha-1-AR subtypes: alpha-1A, -1B and -1D, all of which signal through the Gq/11 family of G-proteins and different subtypes show different patterns of activation. This gene encodes alpha-1D-adrenergic receptor. Similar to alpha-1B-adrenergic receptor gene, this gene comprises 2 exons and a single intron that interrupts the coding region. [provided by RefSeq, Jul 2008],function:This alpha-adrenergic receptor mediates its effect through the influx of extracellular calcium.,similarity:Belongs to the G-protein coupled receptor 1 family.,

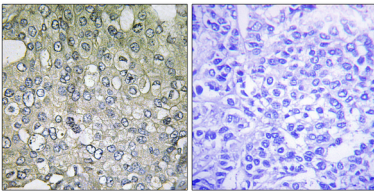
## Research Area

Calcium;Neuroactive ligand-receptor interaction;Vascular smooth muscle contraction;

## Image Data



Immunofluorescence analysis of HeLa cells, using ADRA1D Antibody. The picture on the right is blocked with the synthesized peptide.



Immunohistochemistry analysis of paraffin-embedded human breast carcinoma tissue, using ADRA1D Antibody. The picture on the right is blocked with the synthesized peptide.