

**Product Name: Arylsulfatase G Rabbit Polyclonal Antibody****Catalog #: APRab07186**

For research use only.

**Summary**

<b>Description</b>	Rabbit polyclonal Antibody
<b>Host</b>	Rabbit
<b>Application</b>	WB,IHC,ICC/IF,ELISA
<b>Reactivity</b>	Human,Mouse,Rat
<b>Conjugation</b>	Unconjugated
<b>Modification</b>	Unmodified
<b>Isotype</b>	IgG
<b>Clonality</b>	Polyclonal
<b>Form</b>	Liquid
<b>Concentration</b>	1mg/ml
<b>Storage</b>	Aliquot and store at -20°C (valid for 12 months). Avoid freeze/thaw cycles.
<b>Shipping</b>	Ice bags
<b>Buffer</b>	Liquid in PBS containing 50% glycerol, 0.5% protective protein and 0.02% New type preservative N.
<b>Purification</b>	Affinity purification

**Application**

<b>Dilution Ratio</b>	WB 1:500-1:2000,IHC 1:100-1:300,ICC/IF 1:50-1:200,ELISA 1:20000-1:40000
<b>Molecular Weight</b>	65kDa

**Antigen Information**

<b>Gene Name</b>	ARSG
<b>Alternative Names</b>	ARSG; KIAA1001; Arylsulfatase G; ASG
<b>Gene ID</b>	22901.0
<b>SwissProt ID</b>	Q96EG1
<b>Immunogen</b>	The antiserum was produced against synthesized peptide derived from human ARSG. AA range:251-300

**Background**

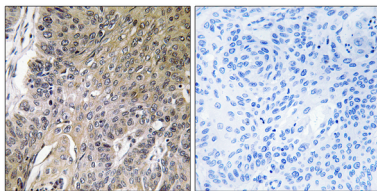
The protein encoded by this gene belongs to the sulfatase enzyme family. Sulfatases hydrolyze sulfate esters from sulfated

steroids, carbohydrates, proteoglycans, and glycolipids. They are involved in hormone biosynthesis, modulation of cell signaling, and degradation of macromolecules. This protein displays arylsulfatase activity at acidic pH, as is typical of lysosomal sulfatases, and has been shown to localize in the lysosomes. Alternatively spliced transcript variants have been found for this gene. [provided by RefSeq, Jun 2012],cofactor: Binds 1 calcium ion per subunit.,PTM:N-glycosylated.,PTM:The conversion to 3-oxoalanine (also known as C-formylglycine, FGly), of a serine or cysteine residue in prokaryotes and of a cysteine residue in eukaryotes, is critical for catalytic activity.,similarity: Belongs to the sulfatase family.,tissue specificity: Widely expressed.,

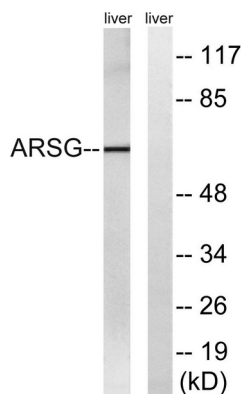
## Research Area

Lysosome;

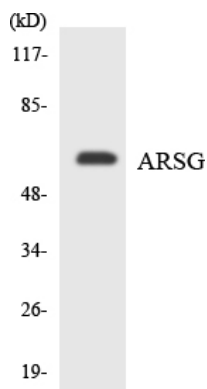
## Image Data



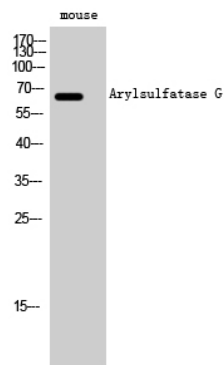
Immunohistochemistry analysis of paraffin-embedded human lung carcinoma tissue, using ARSG Antibody. The picture on the right is blocked with the synthesized peptide.



Western blot analysis of lysates from mouse liver, using ARSG Antibody. The lane on the right is blocked with the synthesized peptide.



Western blot analysis of the lysates from HeLa cells using ARSG antibody.



Western Blot analysis of mouse cells using Arylsulfatase G Polyclonal Antibody