

Product Name: Arylsulfatase D Rabbit Polyclonal Antibody**Catalog #: APRab07183**

For research use only.

Summary

Description	Rabbit polyclonal Antibody
Host	Rabbit
Application	IHC, ICC/IF, ELISA
Reactivity	Human, Rat, Mouse
Conjugation	Unconjugated
Modification	Unmodified
Isotype	IgG
Clonality	Polyclonal
Form	Liquid
Concentration	1mg/ml
Storage	Aliquot and store at -20°C (valid for 12 months). Avoid freeze/thaw cycles.
Shipping	Ice bags
Buffer	Liquid in PBS containing 50% glycerol, 0.5% protective protein and 0.02% New type preservative N.
Purification	Affinity purification

Application

Dilution Ratio	IHC 1:100-1:300, ICC/IF 1:200-1:1000, ELISA 1:10000-1:20000
Molecular Weight	70kDa

Antigen Information

Gene Name	ARSD
Alternative Names	ARSD; Arylsulfatase D; ASD
Gene ID	414.0
SwissProt ID	P51689
Immunogen	The antiserum was produced against synthesized peptide derived from human ARSD. AA range:331-380

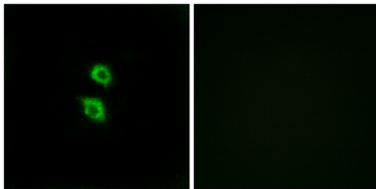
Background

The protein encoded by this gene is a member of the sulfatase family. Sulfatases are essential for the correct composition of

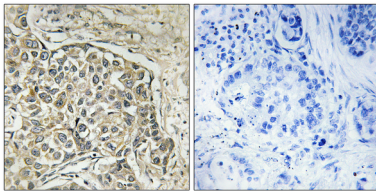
bone and cartilage matrix. The encoded protein is postranslationally glycosylated and localized to the lysosome. This gene is located within a cluster of similar arylsulfatase genes on chromosome X. A related pseudogene has been identified in the pseudoautosomal region of chromosome Y. [provided by RefSeq, Jul 2011],cofactor: Binds 1 calcium ion per subunit.,PTM: The conversion to 3-oxoalanine (also known as C-formylglycine, FGly), of a serine or cysteine residue in prokaryotes and of a cysteine residue in eukaryotes, is critical for catalytic activity.,similarity: Belongs to the sulfatase family.,tissue specificity: Expressed in the pancreas, kidney, liver, lung, placenta, brain and heart.,

Research Area

Image Data



Immunofluorescence analysis of MCF7 cells, using ARSD Antibody. The picture on the right is blocked with the synthesized peptide.



Immunohistochemistry analysis of paraffin-embedded human lung carcinoma tissue, using ARSD Antibody. The picture on the right is blocked with the synthesized peptide.