
Product Name: ARRDC3 Rabbit Polyclonal Antibody**Catalog #: APRab07167**

For research use only.

Summary

Description	Rabbit polyclonal Antibody
Host	Rabbit
Application	WB,IHC,ICC/IF,ELISA
Reactivity	Human,Mouse,Rat
Conjugation	Unconjugated
Modification	Unmodified
Isotype	IgG
Clonality	Polyclonal
Form	Liquid
Concentration	1mg/ml
Storage	Aliquot and store at -20°C (valid for 12 months). Avoid freeze/thaw cycles.
Shipping	Ice bags
Buffer	Liquid in PBS containing 50% glycerol, 0.5% protective protein and 0.02% New type preservative N.
Purification	Affinity purification

Application

Dilution Ratio	WB 1:500-1:2000,IHC 1:100-1:300,ICC/IF 1:50-1:200,ELISA 1:10000-1:20000
Molecular Weight	46kDa

Antigen Information

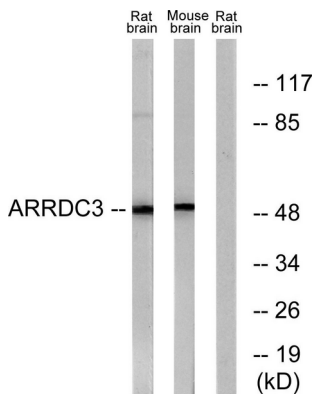
Gene Name	ARRDC3
Alternative Names	ARRDC3; KIAA1376; Arrestin domain-containing protein 3; TBP-2-like inducible membrane protein; TLIMP
Gene ID	57561.0
SwissProt ID	Q96B67
Immunogen	The antiserum was produced against synthesized peptide derived from human ARRDC3. AA range:365-414

Background

This gene encodes a member of the arrestin family of proteins, which regulate G protein-mediated signaling. The encoded protein is thought to act as a regulator of breast cancer growth and progression by binding to a phosphorylated form of integrin beta4, a tumor-related antigen, targeting the integrin for internalization and degradation. [provided by RefSeq, Jul 2016],induction:By troglitazone and pioglitazone (selective PPARG agonists), by prostaglandin J2 (PGJ2) and by L165,041 (a PPAR δ ligand), by vitamin D3 and, to a lesser extent, by PMA (phorbol myristate acetate) in the promyelocytic leukemia HL-60 cells. No induction by retinoic acid, nor by clofibrate (a specific PPAR α agonist),.similarity:Belongs to the arrestin family,.subcellular location:Associated with plasma membrane, as well as with endosomes and lysosomes during endocytosis,.subunit:Does not bind TXN (thioredoxin),.tissue specificity:Highly expressed in skeletal muscle, placenta, kidney, adrenal gland, lymph node, mammary gland, thyroid, and trachea. Very low levels in colon, thymus, spleen, small intestine, bladder and bone marrow. Strong expression in differentiated adipocytes compared to preadipocytes.,

Research Area

Image Data



Western blot analysis of lysates from rat brain and mouse brain cells, using ARRDC3 Antibody. The lane on the right is blocked with the synthesized peptide.