

Product Name: Arrdc1 Rabbit Polyclonal Antibody**Catalog #: APRab07165**

For research use only.

Summary

Description	Rabbit polyclonal Antibody
Host	Rabbit
Application	WB,ICC/IF,ELISA
Reactivity	Human,Mouse,Rat
Conjugation	Unconjugated
Modification	Unmodified
Isotype	IgG
Clonality	Polyclonal
Form	Liquid
Concentration	1mg/ml
Storage	Aliquot and store at -20°C (valid for 12 months). Avoid freeze/thaw cycles.
Shipping	Ice bags
Buffer	Liquid in PBS containing 50% glycerol, 0.5% protective protein and 0.02% New type preservative N.
Purification	Affinity purification

Application

Dilution Ratio	WB 1:500-1:2000,ICC/IF 1:100-1:300,ELISA 1:5000-1:20000
Molecular Weight	48kDa

Antigen Information

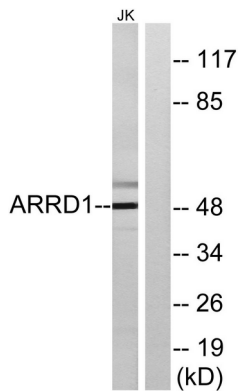
Gene Name	ARRDC1
Alternative Names	ARRDC1; Arrestin domain-containing protein 1
Gene ID	92714.0
SwissProt ID	Q8N5I2
Immunogen	The antiserum was produced against synthesized peptide derived from human ARRDC1. AA range:167-216

Background

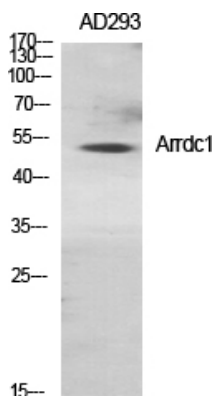
similarity:Belongs to the arrestin family.,similarity:Belongs to the arrestin family.,

Research Area

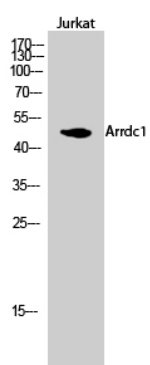
Image Data



Western blot analysis of lysates from Jurkat cells, using ARRD1 Antibody. The lane on the right is blocked with the synthesized peptide.



Western Blot analysis of various cells using Arrdc1 Polyclonal Antibody diluted at 1: 1000



Western Blot analysis of Jurkat cells using Arrdc1 Polyclonal Antibody diluted at 1: 1000