
Product Name: ARPP-21 Rabbit Polyclonal Antibody**Catalog #: APRab07164**

For research use only.

Summary

| | |
|----------------------|---------------------------------------------------------------------------------------------------|
| Description | Rabbit polyclonal Antibody |
| Host | Rabbit |
| Application | WB,IHC,ICC/IF,ELISA |
| Reactivity | Human,Mouse |
| Conjugation | Unconjugated |
| Modification | Unmodified |
| Isotype | IgG |
| Clonality | Polyclonal |
| Form | Liquid |
| Concentration | 1mg/ml |
| Storage | Aliquot and store at -20°C (valid for 12 months). Avoid freeze/thaw cycles. |
| Shipping | Ice bags |
| Buffer | Liquid in PBS containing 50% glycerol, 0.5% protective protein and 0.02% New type preservative N. |
| Purification | Affinity purification |

Application

| | |
|-------------------------|------------------------------------------------------------------------|
| Dilution Ratio | WB 1:500-1:2000,IHC 1:100-1:300,ICC/IF 1:50-1:200,ELISA 1:5000-1:10000 |
| Molecular Weight | 80kDa |

Antigen Information

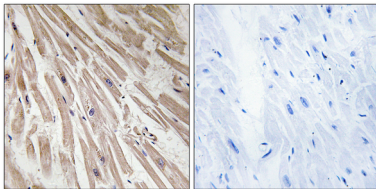
| | |
|--------------------------|----------------------------------------------------------------------------------------------------|
| Gene Name | ARPP21 |
| Alternative Names | ARPP21; TARPP; cAMP-regulated phosphoprotein 21; ARPP-21; Thymocyte cAMP-regulated phosphoprotein |
| Gene ID | 10777.0 |
| SwissProt ID | Q9UBL0 |
| Immunogen | The antiserum was produced against synthesized peptide derived from human ARPP21. AA range:211-260 |

Background

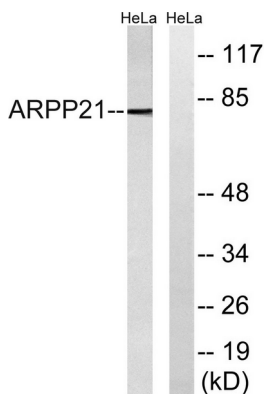
This gene encodes a cAMP-regulated phosphoprotein. The encoded protein is enriched in the caudate nucleus and cerebellar cortex. A similar protein in mouse may be involved in regulating the effects of dopamine in the basal ganglia. Alternate splicing results in multiple transcript variants. [provided by RefSeq, Jun 2012],function:Isoform 2 may act as a competitive inhibitor of calmodulin-dependent enzymes such as calcineurin in neurons.,PTM:Isoform 1 is methylated by CARM1 in immature thymocytes.,PTM:Phosphorylation at Ser-56 favors interaction with CALM1.,similarity:Contains 1 R3H domain.,subunit:Interacts with CALM1.,tissue specificity:Isoform 2 is expressed in brain. Isoform 1 is present in immature thymocytes (at protein level).

Research Area

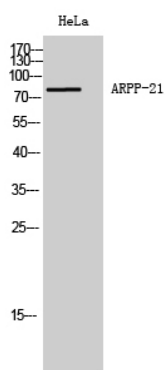
Image Data



Immunohistochemistry analysis of paraffin-embedded human heart tissue, using ARPP21 Antibody. The picture on the right is blocked with the synthesized peptide.



Western blot analysis of lysates from HeLa cells, using ARPP21 Antibody. The lane on the right is blocked with the synthesized peptide.



Western Blot analysis of HeLa cells using ARPP-21 Polyclonal Antibody diluted at 1: 1000