

**Product Name: ARP19 Rabbit Polyclonal Antibody****Catalog #: APRab07157**

For research use only.

**Summary**

<b>Description</b>	Rabbit polyclonal Antibody
<b>Host</b>	Rabbit
<b>Application</b>	WB,ELISA
<b>Reactivity</b>	Human,Mouse,Rat
<b>Conjugation</b>	Unconjugated
<b>Modification</b>	Unmodified
<b>Isotype</b>	IgG
<b>Clonality</b>	Polyclonal
<b>Form</b>	Liquid
<b>Concentration</b>	1mg/ml
<b>Storage</b>	Aliquot and store at -20°C (valid for 12 months). Avoid freeze/thaw cycles.
<b>Shipping</b>	Ice bags
<b>Buffer</b>	Liquid in PBS containing 50% glycerol, and 0.02% New type preservative N.
<b>Purification</b>	Affinity purification

**Application**

<b>Dilution Ratio</b>	WB 1:500-1:2000,ELISA 1:5000-1:20000
<b>Molecular Weight</b>	12kDa

**Antigen Information**

<b>Gene Name</b>	ARPP19
<b>Alternative Names</b>	
<b>Gene ID</b>	10776.0
<b>SwissProt ID</b>	P56211
<b>Immunogen</b>	Synthesized peptide derived from part region of human protein AA range: 1-50

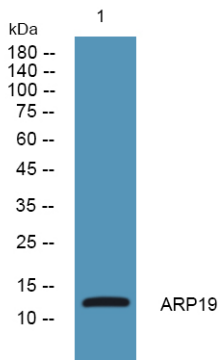
**Background**

The 19-kD cAMP-regulated phosphoprotein plays a role in regulating mitosis by inhibiting protein phosphatase-2A (PP2A; see MIM 176915) (summary by Gharbi-Ayachi et al., 2010 [PubMed 21164014]).[supplied by OMIM, Feb 2011],function:May enhance GAP-43 expression by binding to the NGF-regulatory region of its mRNA.,PTM:Phosphorylated by

PKA.,similarity:Belongs to the endosulfine family.,

## Research Area

## Image Data



Western blot analysis of lysates from SW480 cells, ARP19 Rabbit Polyclonal Antibody was diluted at 1:1000, 4°over night