
Product Name: ARM CX3 Rabbit Polyclonal Antibody**Catalog #: APRab07151**

For research use only.

Summary

Description	Rabbit polyclonal Antibody
Host	Rabbit
Application	WB,IHC,ICC/IF,ELISA
Reactivity	Human,Mouse,Rat
Conjugation	Unconjugated
Modification	Unmodified
Isotype	IgG
Clonality	Polyclonal
Form	Liquid
Concentration	1mg/ml
Storage	Aliquot and store at -20°C (valid for 12 months). Avoid freeze/thaw cycles.
Shipping	Ice bags
Buffer	Liquid in PBS containing 50% glycerol, 0.5% protective protein and 0.02% New type preservative N.
Purification	Affinity purification

Application

Dilution Ratio	WB 1:500-1:2000,IHC 1:100-1:300,ICC/IF 1:200-1:1000,ELISA 1:5000-1:10000
Molecular Weight	38kDa

Antigen Information

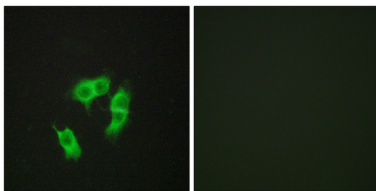
Gene Name	ARM CX3
Alternative Names	ARM CX3; ALEX3; BM-017; Armadillo repeat-containing X-linked protein 3; ARM protein lost in epithelial cancers on chromosome X 3; Protein ALEX3
Gene ID	51566.0
SwissProt ID	Q9UH62
Immunogen	The antiserum was produced against synthesized peptide derived from human ARM X3. AA range:291-340

Background

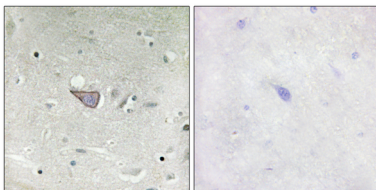
armadillo repeat containing, X-linked 3(ARMCX3) Homo sapiens This gene encodes a member of the ALEX family of proteins which may play a role in tumor suppression. The encoded protein contains a potential N-terminal transmembrane domain and a single Armadillo (arm) repeat. Other proteins containing the arm repeat are involved in development, maintenance of tissue integrity, and tumorigenesis. This gene is closely localized with other family members on the X chromosome. Three transcript variants encoding the same protein have been identified for this gene. [provided by RefSeq, Jul 2008],similarity:Contains 3 ARM repeats.,

Research Area

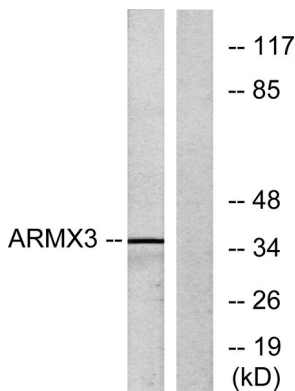
Image Data



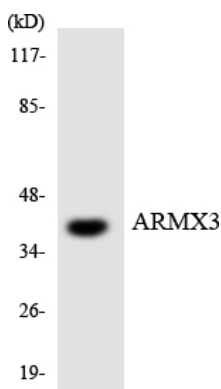
Immunofluorescence analysis of HepG2 cells, using ARMX3 Antibody. The picture on the right is blocked with the synthesized peptide.



Immunohistochemistry analysis of paraffin-embedded human brain tissue, using ARMX3 Antibody. The picture on the right is blocked with the synthesized peptide.



Western blot analysis of lysates from K562 cells, using ARMX3 Antibody. The lane on the right is blocked with the synthesized peptide.



Western blot analysis of the lysates from COLO205 cells using ARMX3 antibody.

