
Product Name: ARM CX1 Rabbit Polyclonal Antibody**Catalog #: APRab07149**

For research use only.

Summary

Description	Rabbit polyclonal Antibody
Host	Rabbit
Application	WB,IHC,ICC/IF,ELISA
Reactivity	Human,Mouse,Rat
Conjugation	Unconjugated
Modification	Unmodified
Isotype	IgG
Clonality	Polyclonal
Form	Liquid
Concentration	1mg/ml
Storage	Aliquot and store at -20°C (valid for 12 months). Avoid freeze/thaw cycles.
Shipping	Ice bags
Buffer	Liquid in PBS containing 50% glycerol, 0.5% protective protein and 0.02% New type preservative N.
Purification	Affinity purification

Application

Dilution Ratio	WB 1:500-1:2000,IHC 1:100-1:300,ICC/IF 1:200-1:1000,ELISA 1:10000-1:20000
Molecular Weight	49kDa

Antigen Information

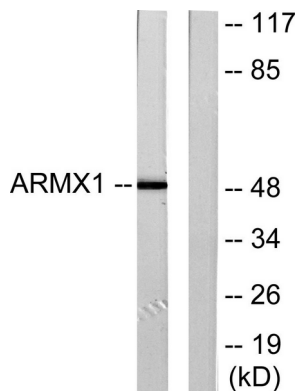
Gene Name	ARM CX1
Alternative Names	ARM CX1; ALEX1; AD032; Armadillo repeat-containing X-linked protein 1; ARM protein lost in epithelial cancers on chromosome X 1; Protein ALEX1
Gene ID	51309.0
SwissProt ID	Q9P291
Immunogen	The antiserum was produced against synthesized peptide derived from human ARMX1. AA range:1-50

Background

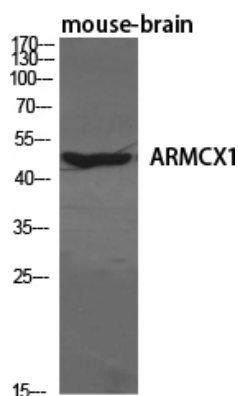
armadillo repeat containing, X-linked 1 (ARMCX1) Homo sapiens This gene encodes a member of the ALEX family of proteins and may play a role in tumor suppression. The encoded protein contains a potential N-terminal transmembrane domain and two Armadillo (arm) repeats. Other proteins containing the arm repeat are involved in development, maintenance of tissue integrity, and tumorigenesis. This gene is closely localized with other family members, including ALEX2 and ALEX3, on the X chromosome. [provided by RefSeq, Jul 2008],similarity:Contains 3 ARM repeats.,tissue specificity:Expressed at high levels ovary, heart, testis, prostate, brain, spleen and colon. Expressed at very low levels in liver and thymus. Not expressed in peripheral blood leukocytes. Not or reduced expressed in lung, prostate, colon, pancreas and ovarian carcinomas.,

Research Area

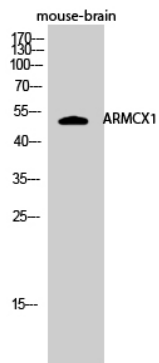
Image Data



Western blot analysis of lysates from rat brain cells, using ARMX1 Antibody. The lane on the right is blocked with the synthesized peptide.



Western Blot analysis of various cells using ARMCX1 Polyclonal Antibody diluted at 1: 1000



Western Blot analysis of mouse-brain cells using ARMCX1 Polyclonal Antibody diluted at 1: 1000