

Product Name: ARHGEF9 Rabbit Polyclonal Antibody**Catalog #: APRab07130**

For research use only.

Summary

Description	Rabbit polyclonal Antibody
Host	Rabbit
Application	IHC,ICC/IF,ELISA
Reactivity	Human,Mouse,Rat
Conjugation	Unconjugated
Modification	Unmodified
Isotype	IgG
Clonality	Polyclonal
Form	Liquid
Concentration	1mg/ml
Storage	Aliquot and store at -20°C (valid for 12 months). Avoid freeze/thaw cycles.
Shipping	Ice bags
Buffer	Liquid in PBS containing 50% glycerol, 0.5% protective protein and 0.02% New type preservative N.
Purification	Affinity purification

Application

Dilution Ratio IHC 1:100-1:300,ICC/IF 1:50-1:200,ELISA 1:20000-1:40000

Molecular Weight

Antigen Information

Gene Name	ARHGEF9
Alternative Names	ARHGEF9; ARHDH9; KIAA0424; Rho guanine nucleotide exchange factor 9; Collybistin; PEM-2 homolog; Rac/Cdc42 guanine nucleotide exchange factor 9
Gene ID	23229.0
SwissProt ID	O43307
Immunogen	The antiserum was produced against synthesized peptide derived from human ARHGEF9. AA range:399-448

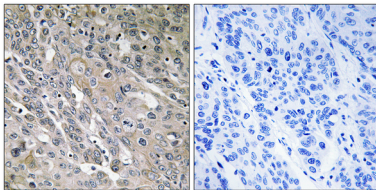
Background

The protein encoded by this gene is a Rho-like GTPase that switches between the active (GTP-bound) state and inactive (GDP-bound) state to regulate CDC42 and other genes. Defects in this gene are a cause of startle disease with epilepsy (STHEE), also known as hyperekplexia with epilepsy. Three transcript variants encoding different isoforms have been found for this gene. [provided by RefSeq, Mar 2010],disease:Defects in ARHGEF9 are a cause of startle disease with epilepsy (STHEE) [MIM:300607]; also known as hyperekplexia with epilepsy. Startle disease is a genetically heterogeneous neurologic disorder. STHE is characterized by muscular rigidity of central nervous system origin, particularly in the neonatal period, and by an exaggerated startle response to unexpected acoustic or tactile stimuli.,function:Acts as guanine nucleotide exchange factor (GEF) for CDC42. Promotes formation of GPHN clusters.,similarity:Contains 1 DH (DBL-homology) domain.,similarity:Contains 1 PH domain.,similarity:Contains 1 SH3 domain.,subunit:Interacts with GPHN.,tissue specificity:Detected in brain. Detected at low levels in heart,.

Research Area

Regulation of Actin Dynamics; AMPK

Image Data



Immunohistochemistry analysis of paraffin-embedded human lung carcinoma tissue, using ARHGEF9 Antibody. The picture on the right is blocked with the synthesized peptide.