
Product Name: ARHGEF10 Rabbit Polyclonal Antibody**Catalog #: APRab07127**

For research use only.

Summary

Description	Rabbit polyclonal Antibody
Host	Rabbit
Application	WB,IHC,ICC/IF,ELISA
Reactivity	Human,Monkey
Conjugation	Unconjugated
Modification	Unmodified
Isotype	IgG
Clonality	Polyclonal
Form	Liquid
Concentration	1mg/ml
Storage	Aliquot and store at -20°C (valid for 12 months). Avoid freeze/thaw cycles.
Shipping	Ice bags
Buffer	Liquid in PBS containing 50% glycerol, 0.5% protective protein and 0.02% New type preservative N.
Purification	Affinity purification

Application

Dilution Ratio	WB 1:500-1:2000,IHC 1:100-1:300,ICC/IF 1:50-1:200,ELISA 1:10000-1:20000
Molecular Weight	152kDa

Antigen Information

Gene Name	ARHGEF10
Alternative Names	ARHGEF10; KIAA0294; Rho guanine nucleotide exchange factor 10
Gene ID	9639.0
SwissProt ID	O15013
Immunogen	The antiserum was produced against synthesized peptide derived from human ARHGEF10. AA range:339-388

Background

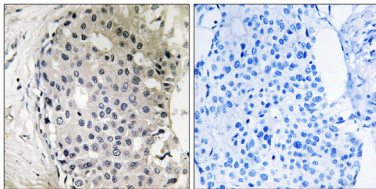
This gene encodes a Rho guanine nucleotide exchange factor (GEF). Rho GEFs regulate the activity of small Rho GTPases by

stimulating the exchange of guanine diphosphate (GDP) for guanine triphosphate (GTP) and may play a role in neural morphogenesis. Mutations in this gene are associated with slowed nerve conduction velocity (SNCV). Alternative splicing results in multiple transcript variants. [provided by RefSeq, Apr 2015],disease:Defects in ARHGEF10 are the cause of slowed nerve conduction velocity (SNCV) [MIM:608236]. Affected individuals present a reduction in nerve conduction velocities without any clinical signs of peripheral or central nervous system dysfunction. SNCV inheritance is autosomal dominant.,function:May play a role in developmental myelination of peripheral nerves.,sequence caution:Cloning artifact.,sequence caution:Translated as Lys.,similarity:Contains 1 DH (DBL-homology) domain.,

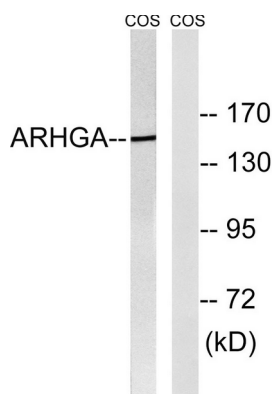
Research Area

Regulation of Actin Dynamics; AMPK

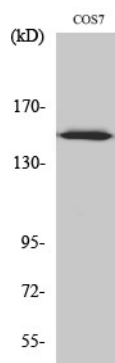
Image Data



Immunohistochemistry analysis of paraffin-embedded human breast carcinoma tissue, using ARHGEF10 Antibody. The picture on the right is blocked with the synthesized peptide.



Western blot analysis of lysates from COS7 cells, using ARHGEF10 Antibody. The lane on the right is blocked with the synthesized peptide.



Western Blot analysis of various cells using ARHGEF10 Polyclonal Antibody