

---

**Product Name: ARHGAP1 Rabbit Polyclonal Antibody****Catalog #: APRab07119**

For research use only.

**Summary**

<b>Description</b>	Rabbit polyclonal Antibody
<b>Host</b>	Rabbit
<b>Application</b>	WB,IHC,ICC/IF,ELISA
<b>Reactivity</b>	Human,Mouse
<b>Conjugation</b>	Unconjugated
<b>Modification</b>	Unmodified
<b>Isotype</b>	IgG
<b>Clonality</b>	Polyclonal
<b>Form</b>	Liquid
<b>Concentration</b>	1mg/ml
<b>Storage</b>	Aliquot and store at -20°C (valid for 12 months). Avoid freeze/thaw cycles.
<b>Shipping</b>	Ice bags
<b>Buffer</b>	Liquid in PBS containing 50% glycerol, 0.5% protective protein and 0.02% New type preservative N.
<b>Purification</b>	Affinity purification

**Application**

<b>Dilution Ratio</b>	WB 1:500-1:2000,IHC 1:100-1:300,ICC/IF 1:50-1:200,ELISA 1:5000-1:20000
<b>Molecular Weight</b>	50kDa

**Antigen Information**

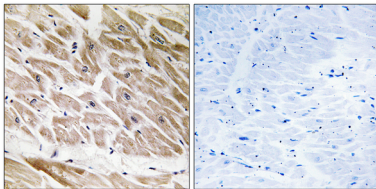
<b>Gene Name</b>	ARHGAP1
<b>Alternative Names</b>	ARHGAP1; CDC42GAP; RHOGAP1; Rho GTPase-activating protein 1; CDC42 GTPase-activating protein; GTPase-activating protein rhoOGAP; Rho-related small GTPase protein activator; Rho-type GTPase-activating protein 1; p50-RhoGAP
<b>Gene ID</b>	392.0
<b>SwissProt ID</b>	Q07960
<b>Immunogen</b>	The antiserum was produced against synthesized peptide derived from human RHG1. AA range:189-238

## Background

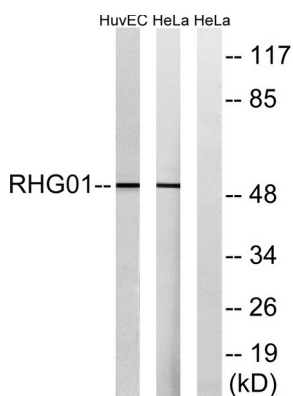
This gene encodes a member of a large family of proteins that activate Rho-type guanosine triphosphate (GTP) metabolizing enzymes. The encoded protein contains a SRC homology 3 domain and interacts with Bcl-2-associated protein family members. [provided by RefSeq, Aug 2012],function:GTPase activator for the Rho, Rac and Cdc42 proteins, converting them to the putatively inactive GDP-bound state. Cdc42 seems to be the preferred substrate.,similarity:Contains 1 CRAL-TRIO domain.,similarity:Contains 1 Rho-GAP domain.,subunit:Found in a complex with XPO7, EIF4A1, ARHGAP1, VPS26A, VPS29, VPS35 and SFN. Interacts with BNIPL.,tissue specificity:Ubiquitous.,

## Research Area

### Image Data



Immunohistochemistry analysis of paraffin-embedded human heart tissue, using RHG1 Antibody. The picture on the right is blocked with the synthesized peptide.



Western blot analysis of lysates from HeLa and HUVEC cells, using RHG1 Antibody. The lane on the right is blocked with the synthesized peptide.