

---

**Product Name: AQP4 Rabbit Polyclonal Antibody****Catalog #: APRab07072**

For research use only.

**Summary**

<b>Description</b>	Rabbit polyclonal Antibody
<b>Host</b>	Rabbit
<b>Application</b>	WB,IHC,ICC/IF,ELISA
<b>Reactivity</b>	Human,Mouse,Rat
<b>Conjugation</b>	Unconjugated
<b>Modification</b>	Unmodified
<b>Isotype</b>	IgG
<b>Clonality</b>	Polyclonal
<b>Form</b>	Liquid
<b>Concentration</b>	1mg/ml
<b>Storage</b>	Aliquot and store at -20°C (valid for 12 months). Avoid freeze/thaw cycles.
<b>Shipping</b>	Ice bags
<b>Buffer</b>	Liquid in PBS containing 50% glycerol, 0.5% protective protein and 0.02% New type preservative N.
<b>Purification</b>	Affinity purification

**Application**

<b>Dilution Ratio</b>	WB 1:500-1:2000,IHC 1:100-1:300,ICC/IF 1:50-1:200,ELISA 1:5000-1:10000
<b>Molecular Weight</b>	35kDa

**Antigen Information**

<b>Gene Name</b>	AQP4
<b>Alternative Names</b>	AQP4; Aquaporin-4; AQP-4; Mercurial-insensitive water channel; MIWC; WCH4
<b>Gene ID</b>	361.0
<b>SwissProt ID</b>	P55087
<b>Immunogen</b>	The antiserum was produced against synthesized peptide derived from human AQP4. AA range:204-253

**Background**

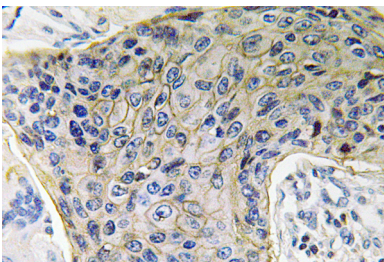
This gene encodes a member of the aquaporin family of intrinsic membrane proteins that function as water-selective channels

in the plasma membranes of many cells. This protein is the predominant aquaporin found in brain and has an important role in brain water homeostasis. Alternatively spliced transcript variants encoding different isoforms have been described for this gene. A recent study provided evidence for translational readthrough in this gene and expression of an additional C-terminally extended isoform via the use of an alternative in-frame translation termination codon. [provided by RefSeq, Dec 2015],domain:Aquaporins contain two tandem repeats each containing three membrane-spanning domains and a pore-forming loop with the signature motif Asn-Pro-Ala (NPA),,function:Forms a water-specific channel. Osmoreceptor which regulates body water balance and mediates water flow within the central nervous system.,similarity:Belongs to the MIP/aquaporin (TC 1.A.8) family.,tissue specificity:Brain - muscle >> heart, kidney, lung, and trachea.,

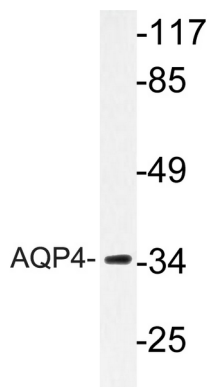
## Research Area

Signal Transduction; Metabolism; Plasma Membrane; Channels; Neuroscience; Processes

## Image Data



Immunohistochemistry analysis of AQP4 antibody in paraffin-embedded human lung carcinoma tissue.



Western blot analysis of lysate from 293 cells, using AQP4 antibody.



Western Blot analysis of various cells using AQP4 Polyclonal Antibody