
Product Name: APS Rabbit Polyclonal Antibody**Catalog #: APRab07061**

For research use only.

Summary

Description	Rabbit polyclonal Antibody
Host	Rabbit
Application	WB,ELISA
Reactivity	Human,Mouse,Rat
Conjugation	Unconjugated
Modification	Unmodified
Isotype	IgG
Clonality	Polyclonal
Form	Liquid
Concentration	1mg/ml
Storage	Aliquot and store at -20°C (valid for 12 months). Avoid freeze/thaw cycles.
Shipping	Ice bags
Buffer	Liquid in PBS containing 50% glycerol, 0.5% protective protein and 0.02% New type preservative N.
Purification	Affinity purification

Application

Dilution Ratio	WB 1:500-1:2000,ELISA 1:10000-1:20000
Molecular Weight	67kDa

Antigen Information

Gene Name	SH2B2
Alternative Names	SH2B2; APS; SH2B adapter protein 2; Adapter protein with pleckstrin homology and Src homology 2 domains; SH2 and PH domain-containing adapter protein APS
Gene ID	10603.0
SwissProt ID	O14492
Immunogen	Synthesized peptide derived from the Internal region of human APS.

Background

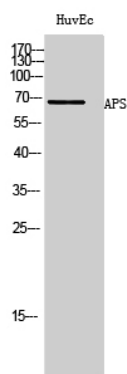
The protein encoded by this gene is expressed in B lymphocytes and contains pleckstrin homology and src homology 2 (SH2)

domains. In Burkitt's lymphoma cell lines, it is tyrosine-phosphorylated in response to B cell receptor stimulation. Because it binds Shc independent of stimulation and Grb2 after stimulation, it appears to play a role in signal transduction from the receptor to the Shc/Grb2 pathway. [provided by RefSeq, Jun 2009],function:Adapter protein for several members of the tyrosine kinase receptor family. Involved in multiple signaling pathways. May be involved in coupling from immunoreceptor to Ras signaling. Acts as a negative regulator of cytokine signaling in collaboration with CBL. Binds to EPOR and suppresses EPO-induced STAT5 activation, possibly through a masking effect on STAT5 docking sites in EPOR. Suppresses PDGF-induced mitogenesis. May induce cytoskeletal reorganization via interaction with VAV3.,PTM:Tyrosine phosphorylated by JAK2, KIT and other kinases activated by B-cell receptor in response to stimulation with cytokines, IL3, IL5, PDGF, IGF1, IGF2, CSF2/GM-CSF and cross-linking of the B-cell receptor complex.,similarity:Belongs to the SH2B adapter family.,similarity:Contains 1 PH domain.,similarity:Contains 1 SH2 domain.,subcellular location:Cytoplasmic before PDGF stimulation. After PDGF stimulation, localized at the cell membrane and peripheral region.,subunit:Interacts with several proteins including KIT/c-KIT, SHC, GRB2, EPOR, CBL/c-CBL, PDGFR, VAV1 and VAV3. Interacts with SHC through its N-terminal region, with GRB2 via the phosphorylated C-terminus and with EPOR and KIT via its SH2 domain. Interacts with GRB2 after B-cell antigen receptor stimulation. Interacts with VAV3 via its PH domain.,tissue specificity:Expressed in spleen, prostrate, testis, uterus, small intestine and skeletal muscle. Among haematopoietic cell lines, expressed exclusively in B-cells. Not expressed in most tumor cell lines.,

Research Area

Neurotrophin;Insulin_Receptor;

Image Data



Western Blot analysis of HuvEc cells using APS Polyclonal Antibody