

Product Name: ApoL5 Rabbit Polyclonal Antibody**Catalog #: APRab07048**

For research use only.

Summary

Description	Rabbit polyclonal Antibody
Host	Rabbit
Application	IHC, ICC/IF, ELISA
Reactivity	Human, Rat, Mouse
Conjugation	Unconjugated
Modification	Unmodified
Isotype	IgG
Clonality	Polyclonal
Form	Liquid
Concentration	1mg/ml
Storage	Aliquot and store at -20°C (valid for 12 months). Avoid freeze/thaw cycles.
Shipping	Ice bags
Buffer	Liquid in PBS containing 50% glycerol, 0.5% protective protein and 0.02% New type preservative N.
Purification	Affinity purification

Application

Dilution Ratio	IHC 1:100-1:300, ICC/IF 1:200-1:1000, ELISA 1:20000-1:40000
Molecular Weight	

Antigen Information

Gene Name	APOL5
Alternative Names	APOL5; Apolipoprotein L5; Apolipoprotein L-V; ApoL-V
Gene ID	80831.0
SwissProt ID	Q9BWW9
Immunogen	The antiserum was produced against synthesized peptide derived from human APOL5. AA range:384-433

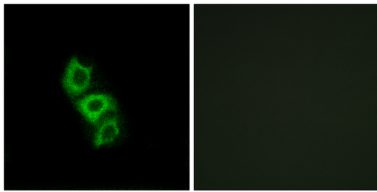
Background

This gene is a member of the apolipoprotein L gene family. The encoded protein is found in the cytoplasm, where it may affect

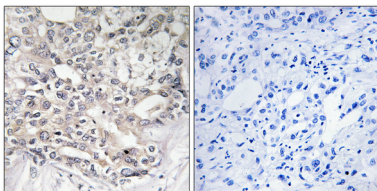
the movement of lipids or allow the binding of lipids to organelles. [provided by RefSeq, Jul 2008],function:May affect the movement of lipids in the cytoplasm or allow the binding of lipids to organelles.,similarity:Belongs to the apolipoprotein L family.,tissue specificity:Low level of expression; detected in uterus, testis, skeletal muscle and stomach.,

Research Area

Image Data



Immunofluorescence analysis of A549 cells, using APOL5 Antibody. The picture on the right is blocked with the synthesized peptide.



Immunohistochemistry analysis of paraffin-embedded human liver carcinoma tissue, using APOL5 Antibody. The picture on the right is blocked with the synthesized peptide.