

---

**Product Name: ApoL4 Rabbit Polyclonal Antibody****Catalog #: APRab07047**

For research use only.

**Summary**

<b>Description</b>	Rabbit polyclonal Antibody
<b>Host</b>	Rabbit
<b>Application</b>	WB,IHC,ICC/IF,ELISA
<b>Reactivity</b>	Human,Rat,Mouse
<b>Conjugation</b>	Unconjugated
<b>Modification</b>	Unmodified
<b>Isotype</b>	IgG
<b>Clonality</b>	Polyclonal
<b>Form</b>	Liquid
<b>Concentration</b>	1mg/ml
<b>Storage</b>	Aliquot and store at -20°C (valid for 12 months). Avoid freeze/thaw cycles.
<b>Shipping</b>	Ice bags
<b>Buffer</b>	Liquid in PBS containing 50% glycerol, 0.5% protective protein and 0.02% New type preservative N.
<b>Purification</b>	Affinity purification

**Application**

<b>Dilution Ratio</b>	WB 1:500-1:2000,IHC 1:100-1:300,ICC/IF 1:200-1:1000,ELISA 1:10000-1:20000
<b>Molecular Weight</b>	34kDa

**Antigen Information**

<b>Gene Name</b>	APOL4
<b>Alternative Names</b>	APOL4; Apolipoprotein L4; Apolipoprotein L-IV; ApoL-IV
<b>Gene ID</b>	80832.0
<b>SwissProt ID</b>	Q9BPW4
<b>Immunogen</b>	The antiserum was produced against synthesized peptide derived from human APOL4. AA range:301-350

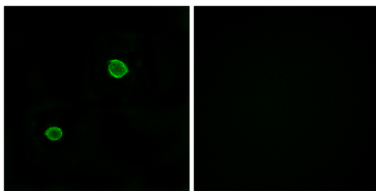
**Background**

The protein encoded by this gene is a member of the apolipoprotein L family and may play a role in lipid exchange and

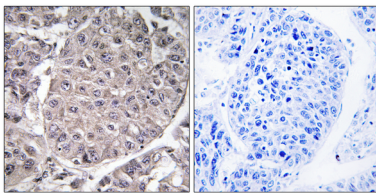
transport throughout the body, as well as in reverse cholesterol transport from peripheral cells to the liver. Two transcript variants encoding two different isoforms have been found for this gene. Only one of the isoforms appears to be a secreted protein. [provided by RefSeq, Jul 2008],function:May play a role in lipid exchange and transport throughout the body. May participate in reverse cholesterol transport from peripheral cells to the liver.,similarity:Belongs to the apolipoprotein L family.,tissue specificity:Widely expressed; the highest levels are in spinal cord, placenta, adrenal gland; also detected in spleen, bone marrow, uterus, trachea, mammary gland and testis; levels are low in brain, heart and pancreas.,

## Research Area

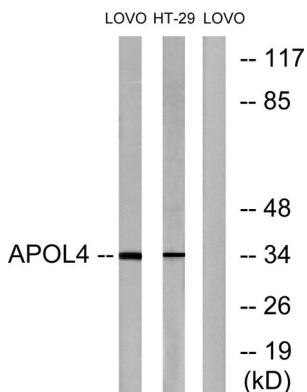
### Image Data



Immunofluorescence analysis of MCF7 cells, using APOL4 Antibody. The picture on the right is blocked with the synthesized peptide.



Immunohistochemistry analysis of paraffin-embedded human liver carcinoma tissue, using APOL4 Antibody. The picture on the right is blocked with the synthesized peptide.



Western blot analysis of lysates from LOVO and HT-29 cells, using APOL4 Antibody. The lane on the right is blocked with the synthesized peptide.