

---

**Product Name: APOC1 Rabbit Polyclonal Antibody****Catalog #: APRab07028**

For research use only.

**Summary**

<b>Description</b>	Rabbit polyclonal Antibody
<b>Host</b>	Rabbit
<b>Application</b>	IHC,ELISA
<b>Reactivity</b>	Human,Rat,Mouse
<b>Conjugation</b>	Unconjugated
<b>Modification</b>	Unmodified
<b>Isotype</b>	IgG
<b>Clonality</b>	Polyclonal
<b>Form</b>	Liquid
<b>Concentration</b>	1mg/ml
<b>Storage</b>	Aliquot and store at -20°C (valid for 12 months). Avoid freeze/thaw cycles.
<b>Shipping</b>	Ice bags
<b>Buffer</b>	Liquid in PBS containing 50% glycerol, 0.5% protective protein and 0.02% New type preservative N.
<b>Purification</b>	Affinity purification

**Application**

**Dilution Ratio** IHC 1:50-1:200,ELISA 1:5000-1:20000

**Molecular Weight**

**Antigen Information**

<b>Gene Name</b>	APOC1
<b>Alternative Names</b>	Apolipoprotein C-I (Apo-CIB;ApoC-IB;Apolipoprotein C1) [Cleaved into: Truncated apolipoprotein C-I (Apo-CIB';ApoC-IB')]
<b>Gene ID</b>	341.0
<b>SwissProt ID</b>	P02654
<b>Immunogen</b>	Synthesized peptide derived from human APOC1 AA range: 1-50

**Background**

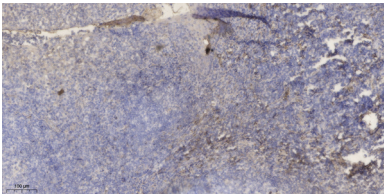
This gene encodes a member of the apolipoprotein C1 family. This gene is expressed primarily in the liver, and it is activated

when monocytes differentiate into macrophages. The encoded protein plays a central role in high density lipoprotein (HDL) and very low density lipoprotein (VLDL) metabolism. This protein has also been shown to inhibit cholesteryl ester transfer protein in plasma. A pseudogene of this gene is located 4 kb downstream in the same orientation, on the same chromosome. This gene is mapped to chromosome 19, where it resides within a apolipoprotein gene cluster. Alternative splicing and the use of alternative promoters results in multiple transcript variants. [provided by RefSeq, Sep 2016],function:Appears to modulate the interaction of APOE with beta-migrating VLDL and inhibit binding of beta-VLDL to the LDL receptor-related protein.,miscellaneous:Apo-CI makes up about 10% of the protein of the VLDL (very low density lipoprotein) and 2% of that of HDL (high density lipoprotein),.online information:Apolipoprotein C1 entry,similarity:Belongs to the apolipoprotein C1 family,.tissue specificity:Synthesized mainly in liver and to a minor degree in intestine. Secreted in plasma,.

## Research Area

Cardiovascular; Lipids / Lipoproteins; Lipoproteins/Apolipoproteins; Lipoproteins; Fatty Acids; Binding proteins; Signal Transduction; Metabolism; Lipid metabolism; Atherosclerosis; Lipoprotein metabolism; Metabolism Pathways and Processes; Metabolic signaling pathways; Lipid and lipoprotein metabolism; Heart disease; Pathways and Processes; Redox metabolism; Fatty acid oxidation

## Image Data



Immunohistochemical analysis of paraffin-embedded human tonsil. 1, Antibody was diluted at 1:200 (4° overnight) . 2, Tris-EDTA,pH9.0 was used for antigen retrieval. 3,Secondary antibody was diluted at 1:200 (room temperature, 30min) .