

Product Name: APBA2BP Rabbit Polyclonal Antibody**Catalog #: APRab06991**

For research use only.

Summary

Description	Rabbit polyclonal Antibody
Host	Rabbit
Application	WB,IHC,ICC/IF,ELISA
Reactivity	Human,Mouse
Conjugation	Unconjugated
Modification	Unmodified
Isotype	IgG
Clonality	Polyclonal
Form	Liquid
Concentration	1mg/ml
Storage	Aliquot and store at -20°C (valid for 12 months). Avoid freeze/thaw cycles.
Shipping	Ice bags
Buffer	Liquid in PBS containing 50% glycerol, 0.5% protective protein and 0.02% New type preservative N.
Purification	Affinity purification

Application

Dilution Ratio	WB 1:500-1:2000,IHC 1:100-1:300,ICC/IF 1:200-1:1000,ELISA 1:20000-1:40000
Molecular Weight	44kDa

Antigen Information

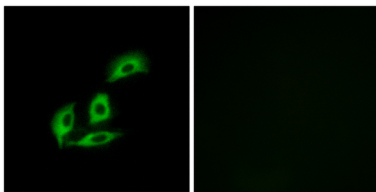
Gene Name	NECAB3 NECAB3; APBA2BP; NIP1; SYTIP2; XB51; N-terminal EF-hand calcium-binding protein 3;
Alternative Names	Amyloid beta A4 protein-binding family A member 2-binding protein; Nek2-interacting protein 1; Neuronal calcium-binding protein 3; X11L-binding protein 51
Gene ID	63941.0
SwissProt ID	Q96P71
Immunogen	The antiserum was produced against synthesized peptide derived from human NECAB3. AA range:321-370

Background

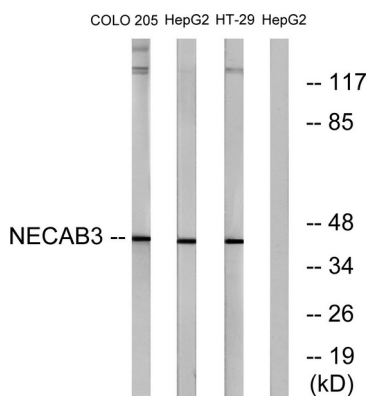
The protein encoded by this gene interacts with the amino-terminal domain of the neuron-specific X11-like protein (X11L), inhibits the association of X11L with amyloid precursor protein through a non-competitive mechanism, and abolishes the suppression of beta-amyloid production by X11L. This protein, together with X11L, may play an important role in the regulatory system of amyloid precursor protein metabolism and beta-amyloid generation. The protein is phosphorylated by NIMA-related expressed kinase 2, and localizes to the Golgi apparatus. Multiple transcript variants encoding different isoforms have been found for this gene. [provided by RefSeq, Jul 2008],alternative products:Additional isoforms seem to exist. Experimental confirmation may be lacking for some isoforms,function:Inhibits the interaction of APBA2 with beta-amyloid precursor protein (APP), and hence allows formation of beta-amyloid.,PTM:Phosphorylated by NEK2.,similarity:Contains 1 ABM domain.,similarity:Contains 1 EF-hand domain.,subunit:Interacts with the N-terminal domain of APBA2. Interacts with NEK2.,tissue specificity:Strongly expressed in heart and skeletal muscle, moderately in brain and pancreas.,

Research Area

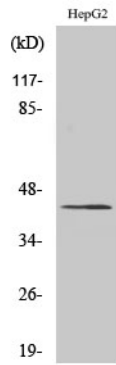
Image Data



Immunofluorescence analysis of A549 cells, using NECAB3 Antibody. The picture on the right is blocked with the synthesized peptide.



Western blot analysis of lysates from HepG2, COLO, and HT-29 cells, using NECAB3 Antibody. The lane on the right is blocked with the synthesized peptide.



Western Blot analysis of various cells using APBA2BP Polyclonal Antibody