
Product Name: Annexin VI Rabbit Polyclonal Antibody**Catalog #: APRab06927**

For research use only.

Summary

Description	Rabbit polyclonal Antibody
Host	Rabbit
Application	WB,IHC,ICC/IF,ELISA
Reactivity	Human,Rat,Mouse
Conjugation	Unconjugated
Modification	Unmodified
Isotype	IgG
Clonality	Polyclonal
Form	Liquid
Concentration	1mg/ml
Storage	Aliquot and store at -20°C (valid for 12 months). Avoid freeze/thaw cycles.
Shipping	Ice bags
Buffer	Liquid in PBS containing 50% glycerol, 0.5% protective protein and 0.02% New type preservative N.
Purification	Affinity purification

Application

Dilution Ratio	WB 1:500-1:2000,IHC 1:100-1:300,ICC/IF 1:100-1:300,ELISA 1:10000-1:20000
Molecular Weight	75kDa

Antigen Information

Gene Name	ANXA6
Alternative Names	ANXA6; ANX6; Annexin A6; 67 kDa calelectrin; Annexin VI; Annexin-6; Calphobindin-II; CPB-II; Chromobindin-20; Lipocortin VI; Protein III; p68; p70
Gene ID	309.0
SwissProt ID	P08133
Immunogen	The antiserum was produced against synthesized peptide derived from human Annexin A6. AA range:1-50

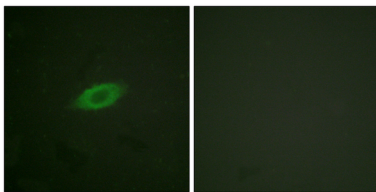
Background

Annexin VI belongs to a family of calcium-dependent membrane and phospholipid binding proteins. Several members of the annexin family have been implicated in membrane-related events along exocytotic and endocytotic pathways. The annexin VI gene is approximately 60 kbp long and contains 26 exons. It encodes a protein of about 68 kDa that consists of eight 68-amino acid repeats separated by linking sequences of variable lengths. It is highly similar to human annexins I and II sequences, each of which contain four such repeats. Annexin VI has been implicated in mediating the endosome aggregation and vesicle fusion in secreting epithelia during exocytosis. Alternatively spliced transcript variants have been described. [provided by RefSeq, Aug 2010],caution:The sequence shown here is derived from an Ensembl automatic analysis pipeline and should be considered as preliminary data.,domain:A pair of annexin repeats may form one binding site for calcium and phospholipid.,function:May associate with CD21. May regulate the release of Ca(2+) from intracellular stores.,induction:By EBV.,miscellaneous:Seems to bind one calcium ion with high affinity.,PTM:Phosphorylated in response to growth factor stimulation.,similarity:Belongs to the annexin family.,similarity:Contains 4 annexin repeats.,similarity:Contains 8 annexin repeats.,subcellular location:Identified by mass spectrometry in melanosome fractions from stage I to stage IV.,

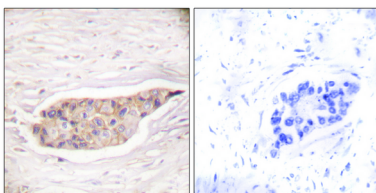
Research Area

Cell Biology

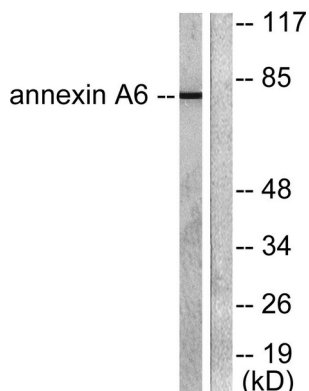
Image Data



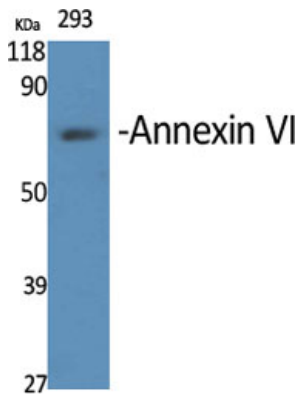
Immunofluorescence analysis of HeLa cells, using Annexin A6 Antibody. The picture on the right is blocked with the synthesized peptide.



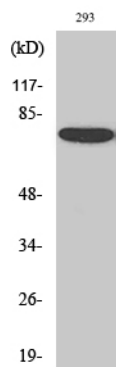
Immunohistochemistry analysis of paraffin-embedded human breast carcinoma tissue, using Annexin A6 Antibody. The picture on the right is blocked with the synthesized peptide.



Western blot analysis of lysates from 293 cells, using Annexin A6 Antibody. The lane on the right is blocked with the synthesized peptide.



Western Blot analysis of various cells using Annexin VI Polyclonal Antibody diluted at 1: 2000



Western Blot analysis of 293 cells using Annexin VI Polyclonal Antibody diluted at 1 : 2000