

Product Name: Angptl7 Rabbit Polyclonal Antibody**Catalog #: APRab06901**

For research use only.

Summary

Description	Rabbit polyclonal Antibody
Host	Rabbit
Application	WB,IHC,ICC/IF,ELISA
Reactivity	Human,Mouse
Conjugation	Unconjugated
Modification	Unmodified
Isotype	IgG
Clonality	Polyclonal
Form	Liquid
Concentration	1mg/ml
Storage	Aliquot and store at -20°C (valid for 12 months). Avoid freeze/thaw cycles.
Shipping	Ice bags
Buffer	Liquid in PBS containing 50% glycerol, 0.5% protective protein and 0.02% New type preservative N.
Purification	Affinity purification

Application

Dilution Ratio	WB 1:500-1:2000,IHC 1:100-1:300,ICC/IF 1:50-1:200,ELISA 1:5000-1:20000
Molecular Weight	50kDa

Antigen Information

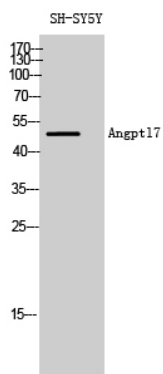
Gene Name	ANGPTL7
Alternative Names	ANGPTL7; CDT6; Angiopoietin-related protein 7; Angiopoietin-like factor; Angiopoietin-like protein 7; Cornea-derived transcript 6 protein
Gene ID	10218.0
SwissProt ID	O43827
Immunogen	The antiserum was produced against synthesized peptide derived from human ANGPTL7. AA range:297-346

Background

similarity:Contains 1 fibrinogen C-terminal domain.,tissue specificity:Highly and specifically expressed in the cornea where is confined to the stromal layer.,similarity:Contains 1 fibrinogen C-terminal domain.,tissue specificity:Highly and specifically expressed in the cornea where is confined to the stromal layer.,

Research Area

Image Data



Western Blot analysis of SH-SY5Y cells using Angptl7 Polyclonal Antibody diluted at 1: 2000