
Product Name: Angptl1 Rabbit Polyclonal Antibody**Catalog #: APRab06897**

For research use only.

Summary

Description	Rabbit polyclonal Antibody
Host	Rabbit
Application	WB,IHC,ICC/IF,ELISA
Reactivity	Human,Mouse,Rat
Conjugation	Unconjugated
Modification	Unmodified
Isotype	IgG
Clonality	Polyclonal
Form	Liquid
Concentration	1mg/ml
Storage	Aliquot and store at -20°C (valid for 12 months). Avoid freeze/thaw cycles.
Shipping	Ice bags
Buffer	Liquid in PBS containing 50% glycerol, 0.5% protective protein and 0.02% New type preservative N.
Purification	Affinity purification

Application

Dilution Ratio	WB 1:500-1:2000,IHC 1:100-1:300,ICC/IF 1:50-1:200,ELISA 1:10000-1:20000
Molecular Weight	57kDa

Antigen Information

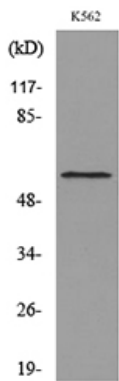
Gene Name	ANGPTL1
Alternative Names	ANGPTL1; ANG3; ANGPT3; ARP1; PSEC0154; Angiotensin-converting enzyme 2-related protein 1; Angiotensin-converting enzyme 2-related protein 3; ANG-3; Angiotensin-converting enzyme 2-related protein 1
Gene ID	9068.0
SwissProt ID	O95841
Immunogen	The antiserum was produced against synthesized peptide derived from the Internal region of human ANGPTL1. AA range:11-60

Background

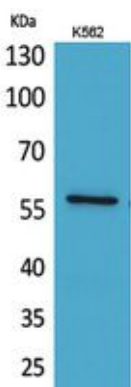
Angiopoietins are members of the vascular endothelial growth factor family and the only known growth factors largely specific for vascular endothelium. Angiopoietin-1, angiopoietin-2, and angiopoietin-4 participate in the formation of blood vessels. The protein encoded by this gene is another member of the angiopoietin family that is widely expressed in adult tissues with mRNA levels highest in highly vascularized tissues. This protein was found to be a secretory protein that does not act as an endothelial cell mitogen in vitro. [provided by RefSeq, Jul 2008],similarity:Contains 1 fibrinogen C-terminal domain.,tissue specificity:Highly expressed in adrenal gland, placenta, thyroid gland, heart, skeletal muscle and small intestine. Weakly expressed in testis, ovary, colon, pancreas, kidney and stomach.,

Research Area

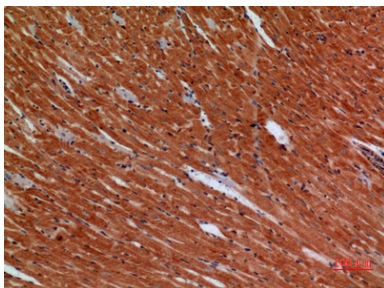
Image Data



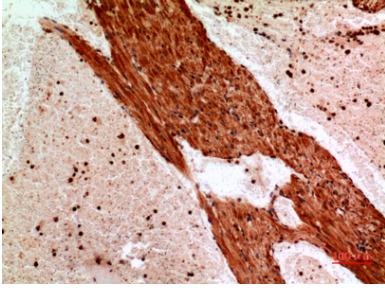
Western blot analysis of lysate from K562 cells, using ANGPTL1 Antibody.



Western Blot analysis of K562 cells using Angptl1 Polyclonal Antibody.. Secondary antibody was diluted at 1:20000



Immunohistochemical analysis of paraffin-embedded mouse-heart, antibody was diluted at 1:100



Immunohistochemical analysis of paraffin-embedded mouse-heart, antibody was diluted at 1:100