
Product Name: ANGP2 Rabbit Polyclonal Antibody**Catalog #: APRab06895**

For research use only.

Summary

| | |
|----------------------|---|
| Description | Rabbit polyclonal Antibody |
| Host | Rabbit |
| Application | WB,ELISA |
| Reactivity | Human,Rat,Mouse |
| Conjugation | Unconjugated |
| Modification | Unmodified |
| Isotype | IgG |
| Clonality | Polyclonal |
| Form | Liquid |
| Concentration | 1mg/ml |
| Storage | Aliquot and store at -20°C (valid for 12 months). Avoid freeze/thaw cycles. |
| Shipping | Ice bags |
| Buffer | Liquid in PBS containing 50% glycerol, 0.5% protective protein and 0.02% New type preservative N. |
| Purification | Affinity purification |

Application

| | |
|-------------------------|--------------------------------------|
| Dilution Ratio | WB 1:500-1:2000,ELISA 1:5000-1:20000 |
| Molecular Weight | 55kDa |

Antigen Information

| | |
|--------------------------|--|
| Gene Name | ANGPT2 |
| Alternative Names | Angiopoietin-2 (ANG-2) |
| Gene ID | 285.0 |
| SwissProt ID | O15123 |
| Immunogen | Synthesized peptide derived from human ANGP2 |

Background

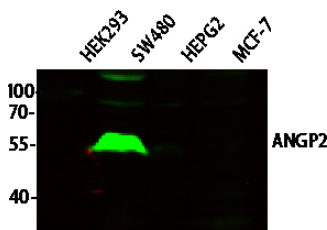
The protein encoded by this gene is an antagonist of angiopoietin 1 (ANGPT1) and endothelial TEK tyrosine kinase (TIE-2, TEK). The encoded protein disrupts the vascular remodeling ability of ANGPT1 and may induce endothelial cell apoptosis. Three

transcript variants encoding three different isoforms have been found for this gene. [provided by RefSeq, Jul 2008],function: Binds to TIE2 receptor and counteracts blood vessel maturation/stability mediated by angiopoietin-1. Its function may be context-dependent. In the absence of angiogenic inducers, such as VEGF, ANG2-mediated loosening of cell-matrix contacts may induce endothelial cell apoptosis with consequent vascular regression. In concert with VEGF, it may facilitate endothelial cell migration and proliferation, thus serving as a permissive angiogenic signal.,online information:Angiopoietin entry,similarity:Contains 1 fibrinogen C-terminal domain.,

Research Area

Cardiovascular

Image Data



Western blot analysis of various lysates, ANG2 Rabbit Polyclonal Antibody was diluted at 1:1000, 4° over night, secondary antibody was diluted at 1:10000, 37° 1hour.