

---

**Product Name: Amphiregulin Rabbit Polyclonal Antibody****Catalog #: APRab06839**

For research use only.

**Summary**

<b>Description</b>	Rabbit polyclonal Antibody
<b>Host</b>	Rabbit
<b>Application</b>	WB,ELISA
<b>Reactivity</b>	Human,Rat,Mouse
<b>Conjugation</b>	Unconjugated
<b>Modification</b>	Unmodified
<b>Isotype</b>	IgG
<b>Clonality</b>	Polyclonal
<b>Form</b>	Liquid
<b>Concentration</b>	1mg/ml
<b>Storage</b>	Aliquot and store at -20°C (valid for 12 months). Avoid freeze/thaw cycles.
<b>Shipping</b>	Ice bags
<b>Buffer</b>	Liquid in PBS containing 50% glycerol, 0.5% protective protein and 0.02% New type preservative N.
<b>Purification</b>	Affinity purification

**Application**

<b>Dilution Ratio</b>	WB 1:500-1:2000,ELISA 1:5000-1:20000
<b>Molecular Weight</b>	17kDa

**Antigen Information**

<b>Gene Name</b>	AREG/AREGB
<b>Alternative Names</b>	AREG; SDGF; AREGB; Amphiregulin; AR; Colorectum cell-derived growth factor; CRDGF
<b>Gene ID</b>	374/727738
<b>SwissProt ID</b>	P15514
<b>Immunogen</b>	The antiserum was produced against synthesized peptide derived from the Internal region of human AREG/AREGB. AA range:91-140

**Background**

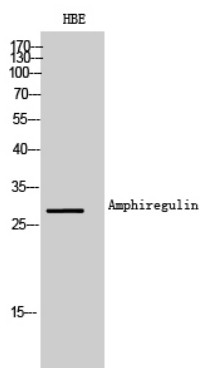
The protein encoded by this gene is a member of the epidermal growth factor family. It is an autocrine growth factor as well as

a mitogen for astrocytes, Schwann cells and fibroblasts. It is related to epidermal growth factor (EGF) and transforming growth factor alpha (TGF-alpha). The protein interacts with the EGF/TGF-alpha receptor to promote the growth of normal epithelial cells, and it inhibits the growth of certain aggressive carcinoma cell lines. It also functions in mammary gland, oocyte and bone tissue development. This gene is associated with a psoriasis-like skin phenotype, and is also associated with other pathological disorders, including various types of cancers and inflammatory conditions. [provided by RefSeq, Apr 2014],function:Bifunctional growth-modulating glycoprotein. Inhibits growth of several human carcinoma cells in culture and stimulates proliferation of human fibroblasts and certain other tumor cells.,induction:By phorbol 12-myristate 13-acetate (PMA),miscellaneous:AR is a protein containing cysteines in disulfide linkage(s) that are essential for its biological activity. AR may contain oligosaccharides and/or lipid moieties that are not obligatory for the biological activity.,similarity:Belongs to the amphiregulin family.,similarity:Contains 1 EGF-like domain.,subunit:The immature precursor interacts with CNIH,

## Research Area

ErbB\_HER;

## Image Data



Western Blot analysis of HBE cells using Amphiregulin Polyclonal Antibody..  
Secondary antibody was diluted at 1:20000