
Product Name: Amphiphysin I Rabbit Polyclonal Antibody**Catalog #: APRab06837**

For research use only.

Summary

Description	Rabbit polyclonal Antibody
Host	Rabbit
Application	WB,ELISA
Reactivity	Human,Mouse,Rat
Conjugation	Unconjugated
Modification	Unmodified
Isotype	IgG
Clonality	Polyclonal
Form	Liquid
Concentration	1mg/ml
Storage	Aliquot and store at -20°C (valid for 12 months). Avoid freeze/thaw cycles.
Shipping	Ice bags
Buffer	Liquid in PBS containing 50% glycerol, 0.5% protective protein and 0.02% New type preservative N.
Purification	Affinity purification

Application

Dilution Ratio	WB 1:500-1:2000,ELISA 1:10000-1:20000
Molecular Weight	76kDa

Antigen Information

Gene Name	AMPH
Alternative Names	AMPH; AMPH1; Amphiphysin
Gene ID	273.0
SwissProt ID	P49418
Immunogen	The antiserum was produced against synthesized peptide derived from human AMPH. AA range:131-180

Background

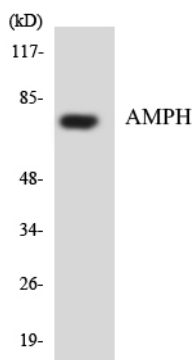
This gene encodes a protein associated with the cytoplasmic surface of synaptic vesicles. A subset of patients with stiff-man

syndrome who were also affected by breast cancer are positive for autoantibodies against this protein. Alternate splicing of this gene results in two transcript variants encoding different isoforms. Additional splice variants have been described, but their full length sequences have not been determined. A pseudogene of this gene is found on chromosome 11.[provided by RefSeq, Nov 2010],disease:Antibodies against AMPH are detected in patients with stiff-man syndrome, a rare disease of the central nervous system characterized by progressive rigidity of the body musculature with superimposed painful spasms.,function:May participate in mechanisms of regulated exocytosis in synapses and certain endocrine cell types. May control the properties of the membrane associated cytoskeleton.,similarity:Contains 1 BAR domain.,similarity:Contains 1 SH3 domain.,subunit:Heterodimer with BIN1. Binds SH3GLB1 and AP2A2.,tissue specificity:Neurons, certain endocrine cell types and spermatocytes.,

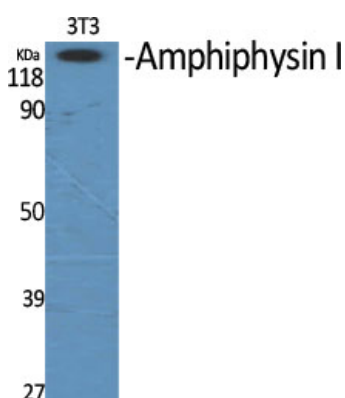
Research Area

Fc gamma R-mediated phagocytosis;

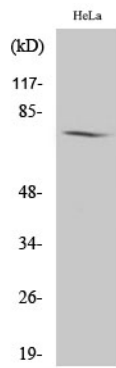
Image Data



Western blot analysis of the lysates from HUVEC cells using AMPH antibody.



Western Blot analysis of various cells using Amphiphysin I Polyclonal Antibody



Western Blot analysis of HeLa cells using Amphiphysin I Polyclonal Antibody