

Product Name: Ameloblastin Rabbit Polyclonal Antibody**Catalog #: APRab06823**

For research use only.

Summary

Description	Rabbit polyclonal Antibody
Host	Rabbit
Application	WB,ELISA
Reactivity	Human,Rat,Mouse
Conjugation	Unconjugated
Modification	Unmodified
Isotype	IgG
Clonality	Polyclonal
Form	Liquid
Concentration	1mg/ml
Storage	Aliquot and store at -20°C (valid for 12 months). Avoid freeze/thaw cycles.
Shipping	Ice bags
Buffer	Liquid in PBS containing 50% glycerol, 0.5% protective protein and 0.02% New type preservative N.
Purification	Affinity purification

Application

Dilution Ratio	WB 1:500-1:2000,ELISA 1:5000-1:20000
Molecular Weight	48kDa

Antigen Information

Gene Name	AMBN
Alternative Names	AMBN; Ameloblastin
Gene ID	258.0
SwissProt ID	Q9NP70
Immunogen	The antiserum was produced against synthesized peptide derived from human Ameloblastin. AA range:275-324

Background

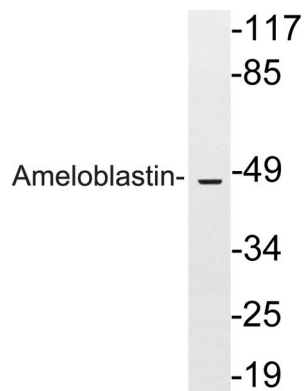
This gene encodes the nonamelogenin enamel matrix protein ameloblastin. The encoded protein may be important in enamel

matrix formation and mineralization. This gene is located in the calcium-binding phosphoprotein gene cluster on chromosome 4. Mutations in this gene may be associated with dentinogenesis imperfect and autosomal dominant amylogenesis imperfect. [provided by RefSeq, Aug 2011],disease:Defects in AMBN are found in patients with ameloblastomas.,function:Involved in the mineralization and structural organization of enamel.,similarity:Belongs to the ameloblastin family.,tissue specificity:Ameloblast-specific. Located at the Tomes processes of secretory ameloblasts and in the sheath space between rod-interrod enamel.,

Research Area

Signal Transduction

Image Data



Western blot analysis of lysates from HeLa cells, using Ameloblastin antibody.