
Product Name: ALS2CR8 Rabbit Polyclonal Antibody**Catalog #: APRab06815**

For research use only.

Summary

Description	Rabbit polyclonal Antibody
Host	Rabbit
Application	WB,IHC,ICC/IF,ELISA
Reactivity	Human,Rat,Mouse
Conjugation	Unconjugated
Modification	Unmodified
Isotype	IgG
Clonality	Polyclonal
Form	Liquid
Concentration	1mg/ml
Storage	Aliquot and store at -20°C (valid for 12 months). Avoid freeze/thaw cycles.
Shipping	Ice bags
Buffer	Liquid in PBS containing 50% glycerol, 0.5% protective protein and 0.02% New type preservative N.
Purification	Affinity purification

Application

Dilution Ratio	WB 1:500-1:2000,IHC 1:100-1:300,ICC/IF 1:50-1:200,ELISA 1:20000-1:40000
Molecular Weight	85kDa

Antigen Information

Gene Name	ALS2CR8
Alternative Names	ALS2CR8; CARF; Amyotrophic lateral sclerosis 2 chromosomal region candidate gene 8 protein; Calcium-response factor; CaRF; Testis development protein NYD-SP24
Gene ID	79800.0
SwissProt ID	Q8N187
Immunogen	The antiserum was produced against synthesized peptide derived from human ALS2CR8. AA range:311-360

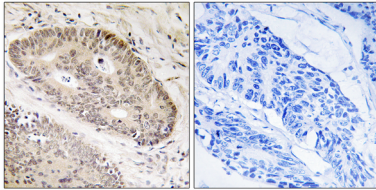
Background

function:May be a transcription factor.,function:May be a transcription factor.,

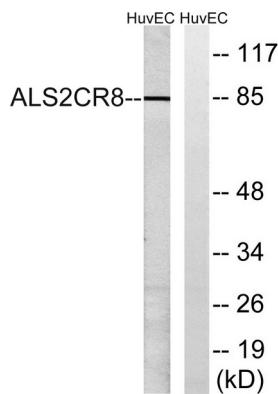
Research Area

Cell Biology

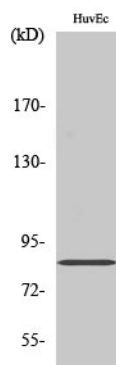
Image Data



Immunohistochemistry analysis of paraffin-embedded human lung carcinoma tissue, using ALS2CR8 Antibody. The picture on the right is blocked with the synthesized peptide.



Western blot analysis of lysates from HUVEC cells, using ALS2CR8 Antibody. The lane on the right is blocked with the synthesized peptide.



Western Blot analysis of various cells using ALS2CR8 Polyclonal Antibody.