

---

**Product Name: ALS2CR4 Rabbit Polyclonal Antibody****Catalog #: APRab06813**

For research use only.

**Summary**

<b>Description</b>	Rabbit polyclonal Antibody
<b>Host</b>	Rabbit
<b>Application</b>	WB,ELISA
<b>Reactivity</b>	Human,Mouse
<b>Conjugation</b>	Unconjugated
<b>Modification</b>	Unmodified
<b>Isotype</b>	IgG
<b>Clonality</b>	Polyclonal
<b>Form</b>	Liquid
<b>Concentration</b>	1mg/ml
<b>Storage</b>	Aliquot and store at -20°C (valid for 12 months). Avoid freeze/thaw cycles.
<b>Shipping</b>	Ice bags
<b>Buffer</b>	Liquid in PBS containing 50% glycerol, 0.5% protective protein and 0.02% New type preservative N.
<b>Purification</b>	Affinity purification

**Application**

<b>Dilution Ratio</b>	WB 1:500-1:2000,ELISA 1:10000-1:20000
<b>Molecular Weight</b>	48kDa

**Antigen Information**

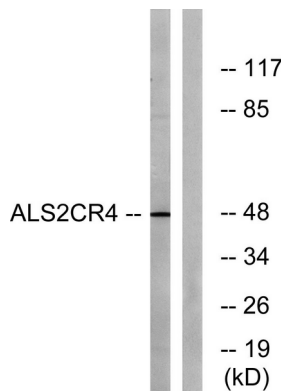
<b>Gene Name</b>	TMEM237
<b>Alternative Names</b>	TMEM237; ALS2CR4; Transmembrane protein 237; Amyotrophic lateral sclerosis 2 chromosomal region candidate gene 4 protein
<b>Gene ID</b>	65062.0
<b>SwissProt ID</b>	Q96Q45
<b>Immunogen</b>	The antiserum was produced against synthesized peptide derived from human ALS2CR4. AA range:181-230

**Background**

The protein encoded by this gene is a tetraspanin protein that is thought to be involved in WNT signaling. Defects in this gene are a cause of Joubert syndrome-14. Two transcript variants encoding different isoforms have been found for this gene. [provided by RefSeq, Jan 2012],

## Research Area

## Image Data



Western blot analysis of lysates from Jurkat cells, using ALS2CR4 Antibody. The lane on the right is blocked with the synthesized peptide.